



Pier Street E14

2 Bed 1 Bath
668 sqft (approx..)

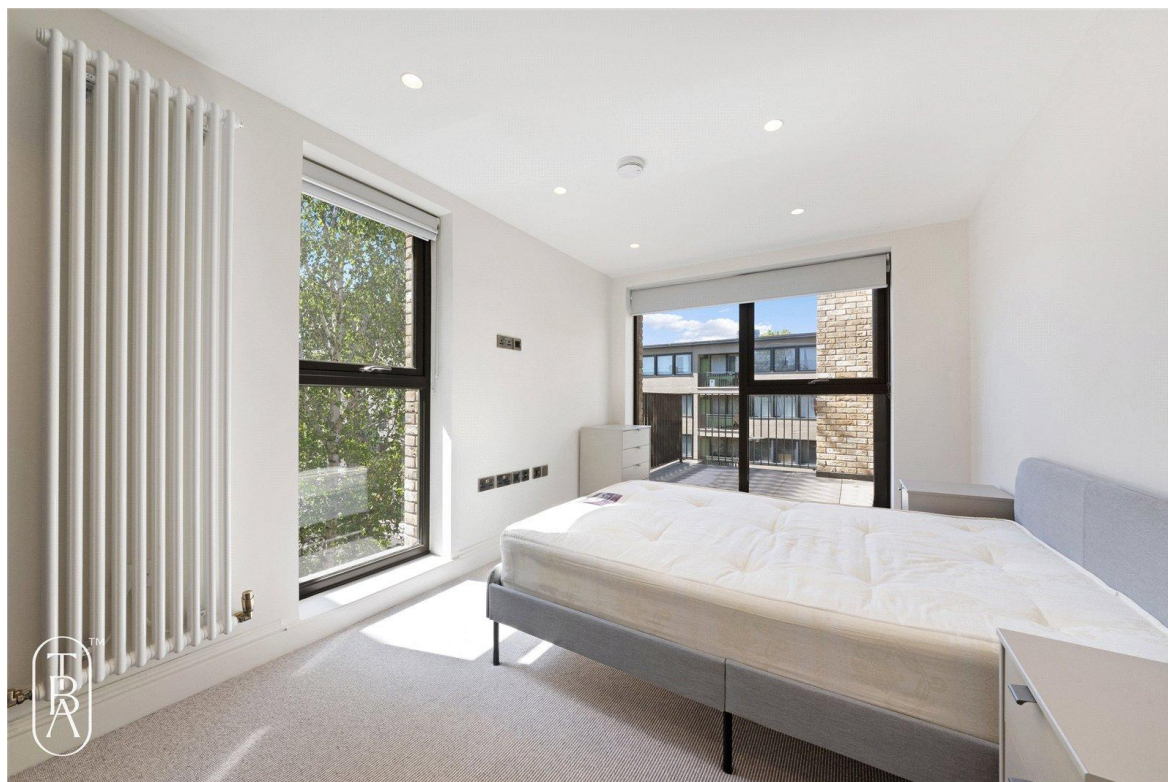
Situated within a boutique development converted just over two years ago, this lateral apartment boasts a beautiful presentation spanning 668 sqft (approx.) with two double bedrooms, one bathroom and a private balcony.

- Excellent Natural Light
- Close to Canary Wharf
- Modern Development

The Bespoke Agent™



The Bespoke Agent™



The Bespoke Agent™

Situated on the first floor, this apartment offers high-quality finishes, herringbone parquet flooring, and ample natural light. There is a spacious lounge perfect for entertaining and dining, with access to a private balcony. The modern open plan kitchen is fully equipped.

Both bedrooms are well-proportioned doubles, including free standing wardrobes. The main bathroom includes a bath and an overhead shower, featuring large grey tiles and matte black finishes.

Conveniently located near the River Thames and Canary Wharf, this property is just a short walk away from Crossharbour station (DLR line) and Island Gardens station (DLR line). Additionally, Canary Wharf can be reached by cycling in approximately 8 minutes, while Liverpool Street is approximately 28 minutes away by bicycle.

Available From: Friday 08th May 2026

Furnishing: Part Furnished

Parking: N/A

Local Authority: Tower Hamlets

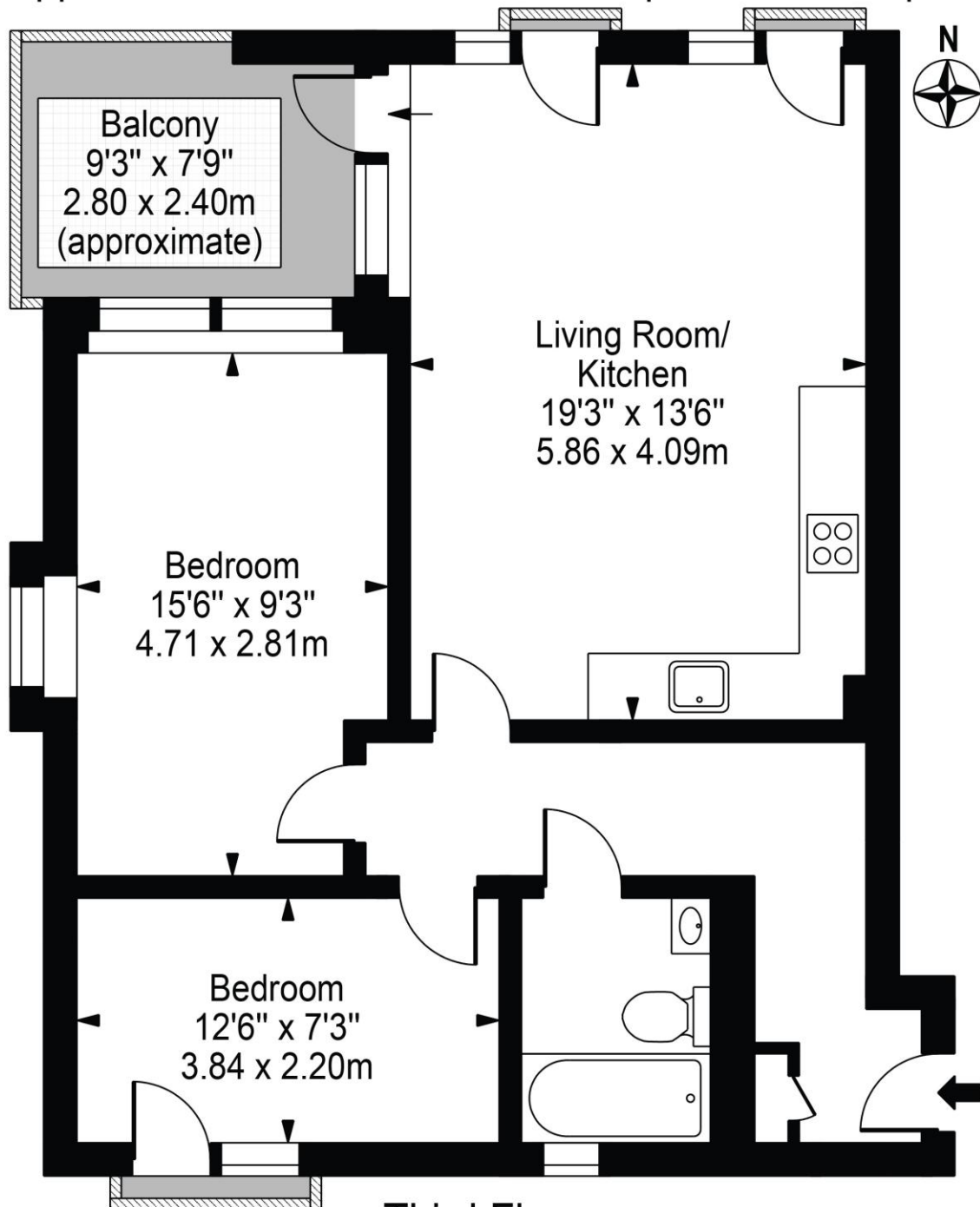
Council Tax Band: D

The Bespoke Agent™



Pier Street

Approx. Gross Internal Area 668 Sq Ft - 62.09 Sq M



Third Floor

For Illustration Purposes Only - Not To Scale

This floor plan should be used as a general outline for guidance only and does not constitute in whole or in part an offer or contract. Any intending purchaser or lessee should satisfy themselves by inspection, searches, enquiries and full survey as to the correctness of each statement. Any areas, measurements or distances quoted are approximate and should not be used to value a property or be the basis of any sale or let.