



Great James Street WC1N

Freehold

6/7 Bed 5 Bath

6140 sqft (approx)

A Distinguished Bloomsbury Townhouse with Roof Terrace and Timeless Character

Set along the refined Great James Street, widely regarded as one of Bloomsbury's most elegant and historically significant avenues, this outstanding period home delivers an exceptional balance of classic Georgian architecture and refined contemporary design.

- Prominent Georgian Townhouse
- Prime Bloomsbury
- 3x Private Terraces

The Bespoke Agent™



The Bespoke Agent™

Spanning over 6,100 sqft (approx.), the interior unfolds across expansive accommodation comprising 6/7 large double bedrooms, 2 reception rooms, 5 bathrooms, and 3 private terraces. Throughout, original architectural details sit harmoniously alongside modern enhancements, including meticulously maintained M&E, making the home not only practical but also entirely usable.

The ground and first floors are beautifully finished with exposed wood panelling, centred around a truly unique, hand-carved spindle staircase that rises to frame a striking arched window of approximately 15 feet in height. Double doors lead directly into the heart of the home—the Bulthaup designed kitchen—expertly appointed with Gaggenau appliances, including a gas-fired hob, range cooker, and full-height wine fridge. A generous expanse of worktop incorporates a built-in breakfast bar, while a versatile pantry or study sits discreetly to one side.

Arranged as the primary reception room, the triple-window frontage, paired with impressive 3.4-metre ceiling heights, floods the space with natural light and creates a remarkable sense of volume. To the rear is a versatile music room or additional bedroom, complemented by an adjoining study.



The Bespoke Agent™

Downstairs, the generously proportioned family room enjoys its own independent access, making it ideally suited for use as a guest suite or self-contained annexe if required. This level also includes a WC, a fully tiled shower room, a bedroom, and a dedicated cinema room complete with a fitted projector. Beneath the street towards the front of the house, the tanked vaults ingeniously house heated water tanks and boilers.

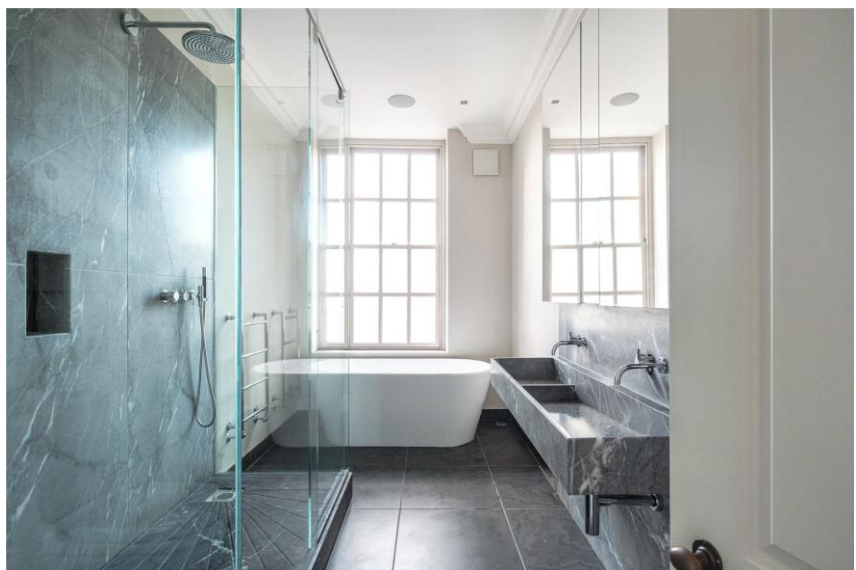
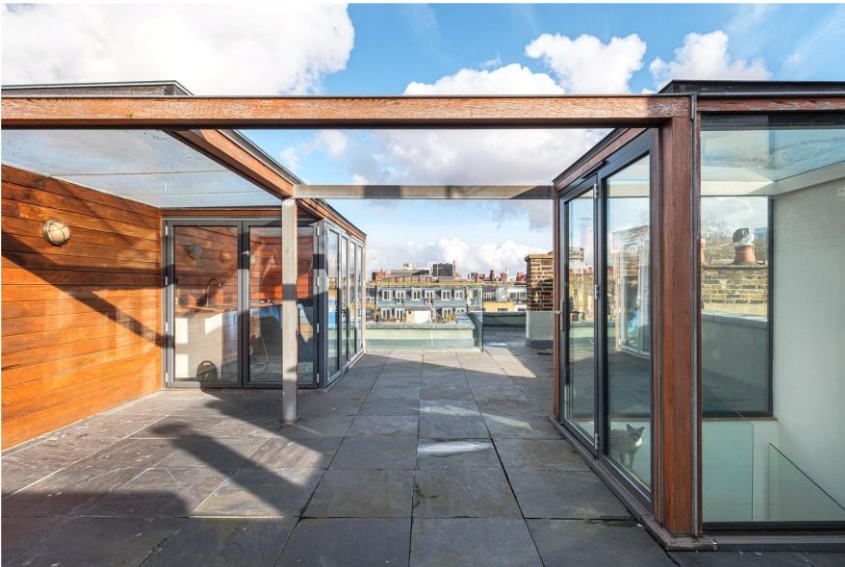
The upper floors accommodate five additional bedrooms and four bathrooms, including an opulent principal suite featuring a dressing room, walk-through wardrobe, and a beautifully appointed en-suite bathroom with a separate shower. A discreetly integrated utility and kitchenette on the third floor add a thoughtful touch of convenience, streamlining everyday living and laundry routines.

Ascending the open-tread timber staircase to the roof terrace is a particular highlight, as the glazed extension opens out onto a slate-tiled terrace that is not only wonderfully private but also offers far-reaching views across the London skyline—a rare urban sanctuary. With a rooftop kitchen housed within a bi-fold-doored extension, this is a space designed for entertaining on summer days. Storage is also plentiful, with three separate units ideal for furniture or a barbecue.

Renowned for its rich cultural legacy, Great James Street is lined with impeccably preserved early Georgian townhouses, many of which hold Grade II listed status. The street sits at the heart of London's intellectual quarter, just a short walk from the British Museum, the serenity of Gray's Inn Gardens, and Bloomsbury's celebrated mix of independent bookshops, cafés, and destination dining along Lamb's Conduit Street. It is reassuring to have the likes of Ciao Bella, Holborn Dining Room and The Coral Room all within easy reach, with Covent Garden and Soho also nearby.

Tenure: Freehold
Lease Length: N/A
Service Charge: N/A
Ground Rent: N/A
Parking: On-street via permit
Local Authority: Camden Council
Council Tax Band: H

The Bespoke Agent™



Approximate Gross Internal Area
 Lower Ground Floor = 1271 sq ft / 118.1 sq m
 Ground Floor = 1210 sq ft / 112.4 sq m
 First Floor = 1053 sq ft / 97.8 sq m
 Second Floor = 1040 sq ft / 96.6 sq m
 Third Floor = 1037 sq ft / 96.4 sq m
 Fourth Floor = 104 sq sq ft / 9.7 sq m
 Total = 5715 sq ft / 531 sq m



Storage / Reduced Headroom = 178 sq ft / 16.5 sq m
 Vaults = 247 sq ft / 23.0 sq m
 Total = 6140 sq ft / 570.5 sq m

Approximate Gross External Area = 936 sq ft / 87.0 sq m



This plan is for layout guidance only. Not drawn to scale unless stated. Windows and door openings are approximate. Whilst every care is taken in the preparation of this plan, please check all dimensions, shapes and compass bearings before making any decisions reliant upon them. (ID1270887)