

## Hoxton Square N1

3 Bed 3 Bath  
1316 sqft (approx)

This 1,316 sqft (approx) 3 bedroom 3 bathroom luxurious duplex penthouse apartment on Hoxton Square enjoys a wrap around fully decked, private roof terrace right in the centre of town.

- Duplex Penthouse
- Private wrap-around terrace
- City views

# The Bespoke Agent™



# The Bespoke Agent™

Stepping inside, you are greeted by a light-filled hallway that guides you to three well-proportioned bedrooms. Two of these rooms are enhanced by their own contemporary en suite bathrooms, while a separate guest WC is positioned for easy access.

Across the first floor, expansive double-glazed windows, generous ceiling heights, and underfloor heating contribute to a comfortable and refined feel. The property is further equipped with a secure video entry system to ensure privacy and security.

On the upper level, you'll find an impressive open-plan space that combines the kitchen and living room, offering an ideal setting for hosting guests or simply unwinding at home. The kitchen is fully equipped with high-quality integrated appliances, including a dishwasher, and features a generous island that comfortably seats up to five people.

From the living area, doors lead out to two large private terraces positioned on opposite sides of the home. Each terrace is finished with decking and showcases sweeping views over the city, making them perfect for alfresco meals or enjoying quiet moments outdoors.

Hoxton Square is an area of Shoreditch that enjoys being within close proximity of an exciting variety of restaurants, bars and galleries. Transport connections are nearby with Old Street Station (Northern Line) and Shoreditch High Street station (London Overground) both a few-minutes' walk away.

Available From: Monday 12th January 2026

Furnishing: Furnished

Parking: Car-free development

Local Authority: Hackney Council

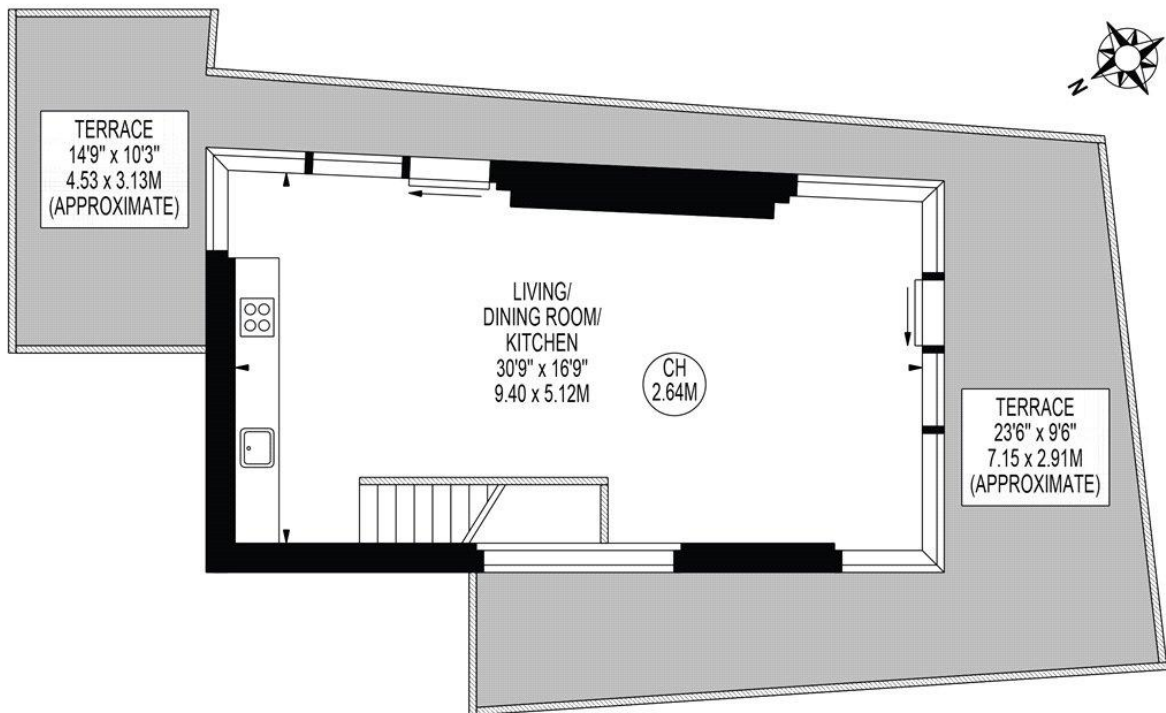
Council Tax Band: E

# The Bespoke Agent™

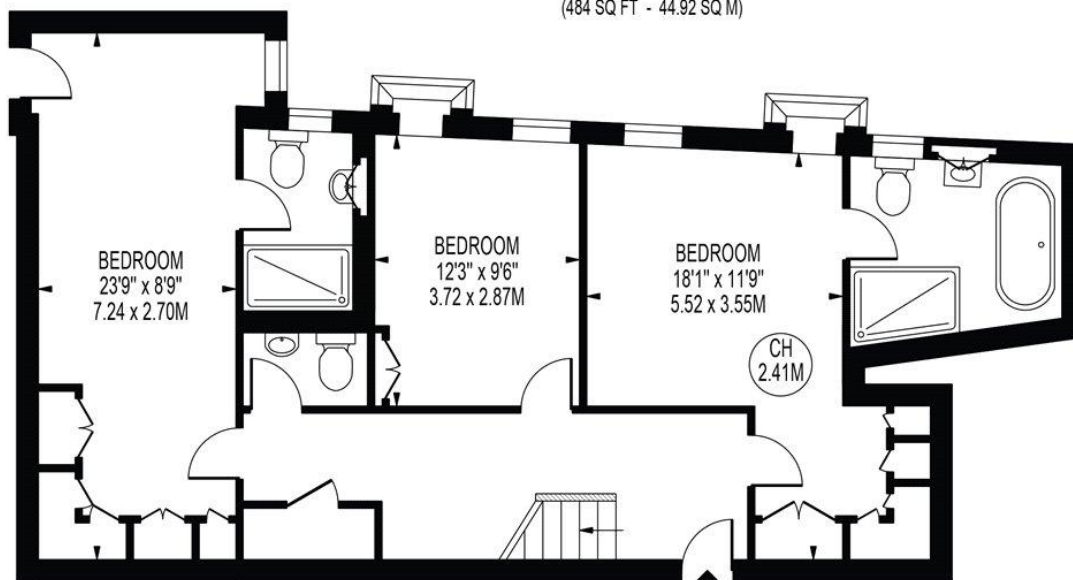


## HOXTON SQUARE

APPROXIMATE GROSS INTERNAL FLOOR AREA: 1316 SQ FT - 122.24 SQ M



FIFTH FLOOR  
(484 SQ FT - 44.92 SQ M)



FOURTH FLOOR  
(832 SQ FT - 77.32 SQ M)

FOR ILLUSTRATION PURPOSES ONLY

THIS FLOOR PLAN SHOULD BE USED AS A GENERAL OUTLINE FOR GUIDANCE ONLY AND DOES NOT CONSTITUTE IN WHOLE OR IN PART AN OFFER OR CONTRACT. ANY INTENDING PURCHASER OR LESSEE SHOULD SATISFY THEMSELVES BY INSPECTION, SEARCHES, ENQUIRIES AND FULL SURVEY AS TO THE CORRECTNESS OF EACH STATEMENT. ANY AREAS, MEASUREMENTS OR DISTANCES QUOTED ARE APPROXIMATE AND SHOULD NOT BE USED TO VALUE A PROPERTY OR BE THE BASIS OF ANY SALE OR LET.