



Odessa Street SE16

1 Bed 1 Bath
601 sqft (approx)

Located within the prestigious New Caledonian Wharf development, moments from Greenland Pier and Canada Water Station, is this beautifully presented 1 bed, 1 bath apartment, offering approximately 601 sq ft of well-designed living space.

- On Site Amenities
- Private Balcony
Overlooking River
Thames
- Open Plan Layout

The Bespoke Agent™



The Bespoke Agent™

Positioned on the third floor with lift access, this apartment boasts impressive views from both the bedroom and private balcony. The interior is bright and spacious throughout, and features a stylish open plan kitchen, fitted with fully integrated appliances. A well proportioned bedroom with built in wardrobes, a large hallway cupboard, and a separate utility area within the bathroom make up the remainder of the space.

Residents benefit from access to the on site amenities, including an indoor swimming pool overlooking the river Thames and Canary Wharf, a state of the art gym, communal garden and secure gated area with 24hour concierge.

Ideally situated, the property is just a 5 minute walk from Greenland Pier. offering scenic riverside walks and Thames Clipper connections, and around 10-15-minute walk from Canada Water Station, providing excellent transport links, shops and restaurants. This historical area was once part of Surrey Docks and now converted into a gated residential area.

Available From: Friday 14th November 2025

Furnishing: Furnished, Part Furnished, Unfurnished

Parking: N/A

Local Authority: Southwark Council

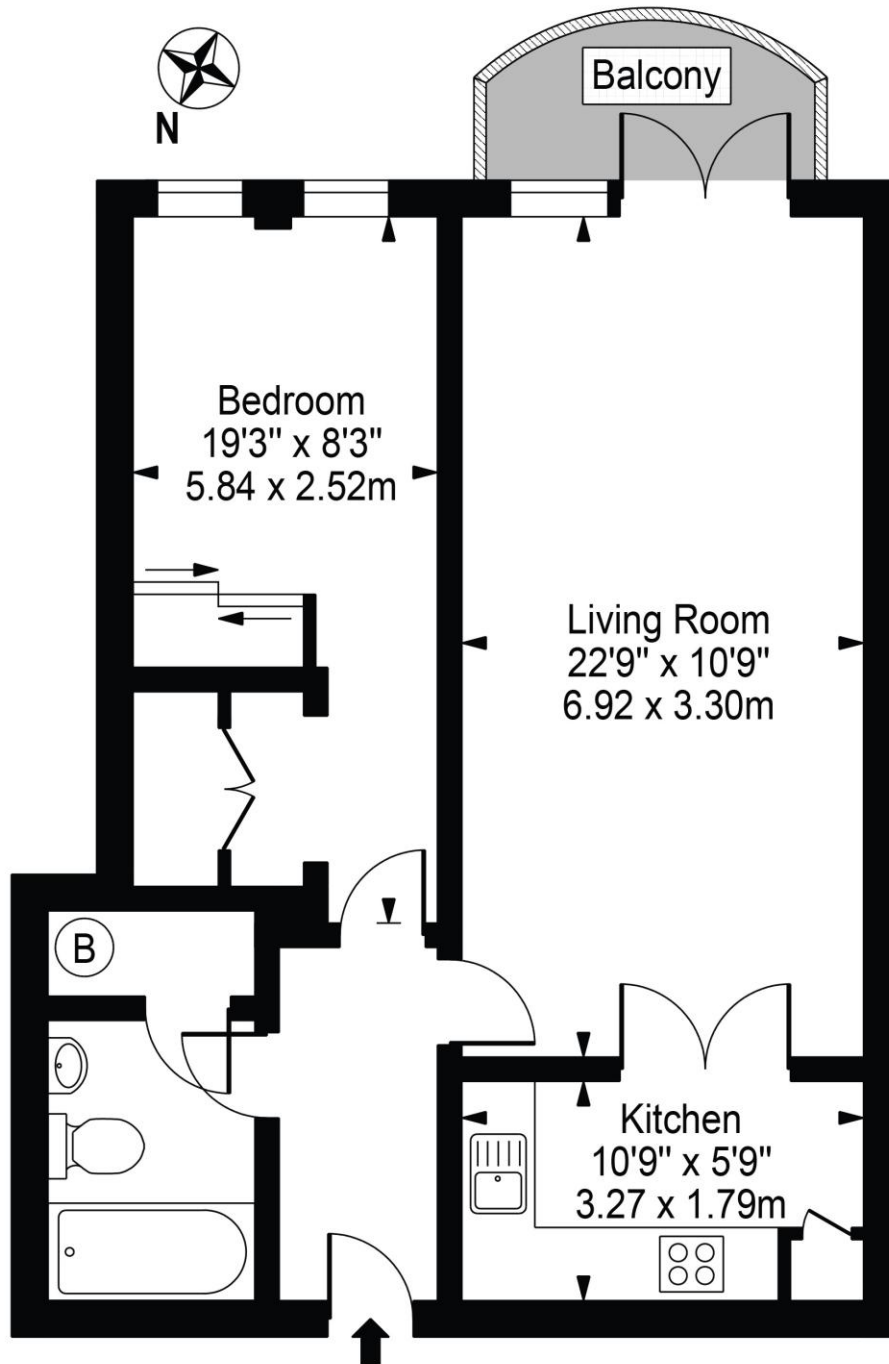
Council Tax Band: D

The Bespoke Agent™



New Caledonian Wharf

Approx. Gross Internal Area 601 Sq Ft - 55.83 Sq M



Third Floor

For Illustration Purposes Only - Not To Scale

This floor plan should be used as a general outline for guidance only and does not constitute in whole or in part an offer or contract. Any intending purchaser or lessee should satisfy themselves by inspection, searches, enquiries and full survey as to the correctness of each statement. Any areas, measurements or distances quoted are approximate and should not be used to value a property or be the basis of any sale or let.