



## Gainsford Street SE1

3 Bed 2 Bath  
1100 sqft (approx)

Tamarind Court on Gainsford Street is a 3 bed 2 bath apartment that spans 1,100 sqft (approx) within a former Victorian warehouse thoughtfully converted in the late 90's and located in the serene and historic Shad Thames area.

- Former warehouse building
- Large living space
- Lift access

# The Bespoke Agent™



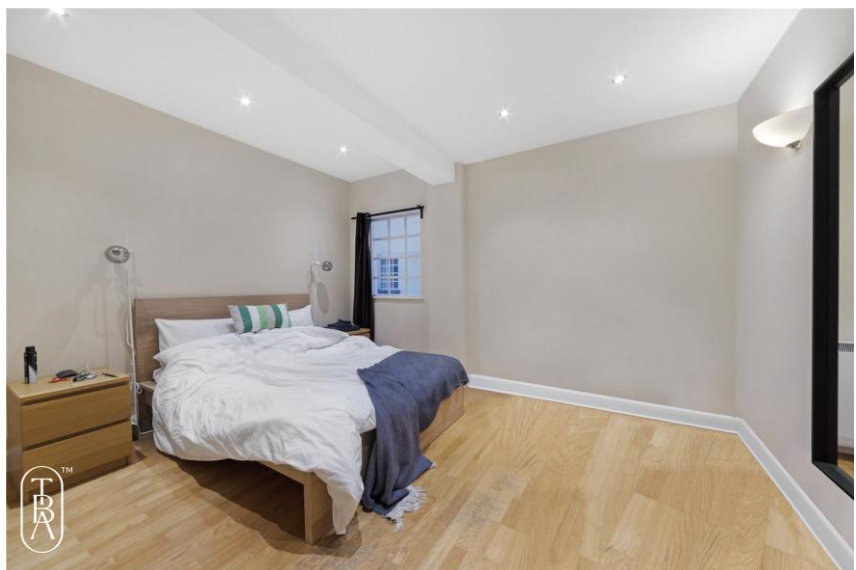
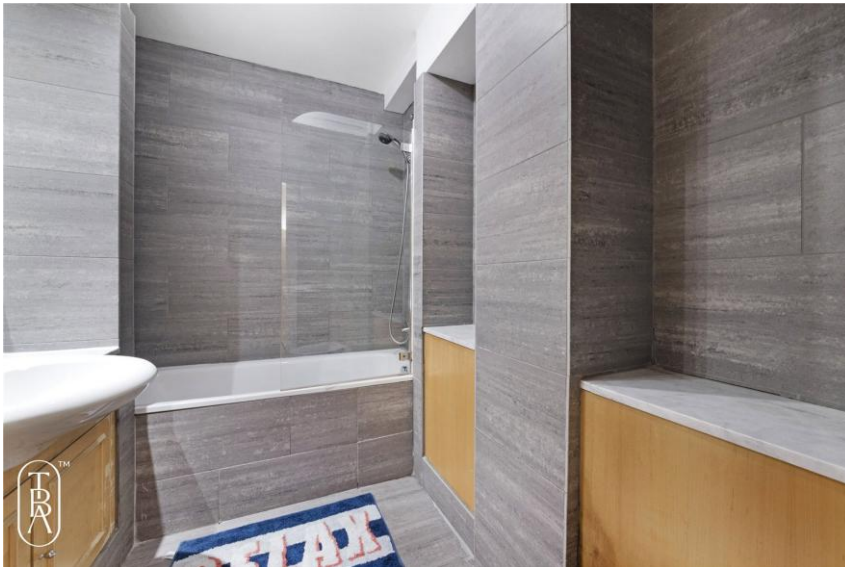
# The Bespoke Agent™

This apartment is set on the first floor, accessible by lift, and offers an urban outlook over Gainsford Street. Fixtures and fittings include wooden floors throughout, neutral décor, fully tiled bathrooms and a kitchen complete with integrated appliances.

Nestled along the River Thames beside Tower Bridge, Shad Thames is a highly desirable place to live. This peaceful neighbourhood offers a welcome escape from the busy energy of nearby London Bridge, Borough, and the City. Within a short stroll, residents can enjoy a vibrant selection of popular cafes, restaurants, and gyms both in the local streets and along the waterfront.

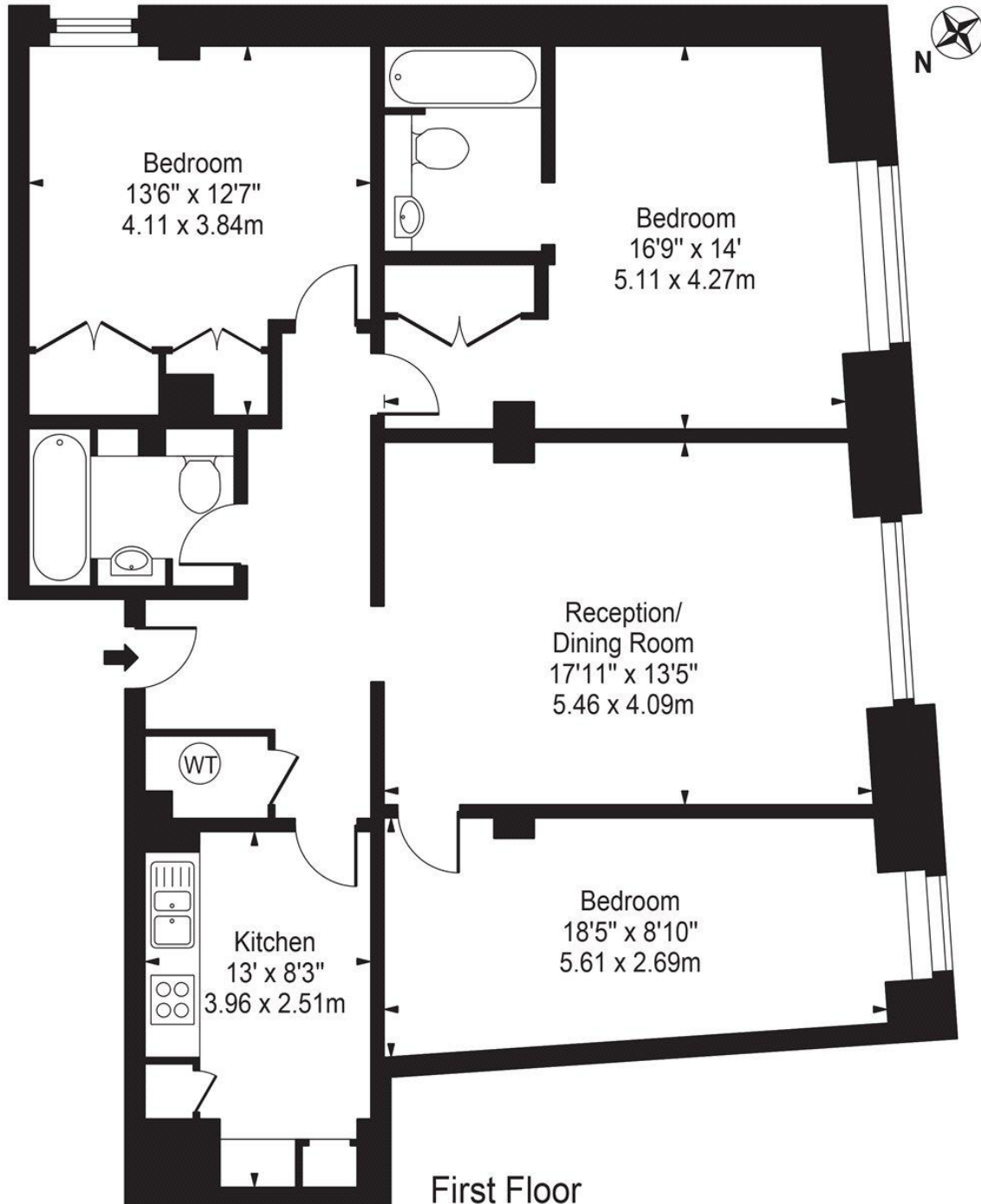
Available From: 15/07/2025  
Furnishing: Furnished  
Parking: On-street via permit  
Local Authority: Southwark Council  
Council Tax Band: F

# The Bespoke Agent™



## Tamarind Court

Approx. Gross Internal Area 1100 Sq Ft - 102.19 Sq M



For Illustration Purposes Only - Not To Scale

This floor plan should be used as a general outline for guidance only and does not constitute in whole or in part an offer or contract. Any intending purchaser or lessee should satisfy themselves by inspection, searches, enquiries and full survey as to the correctness of each statement. Any areas, measurements or distances quoted are approximate and should not be used to value a property or be the basis of any sale or let.