



## Grundy Street E14

4 Bed 2 Bath  
747 sqft (approx)

Located on Grundy Street, moments from Westferry DLR and only a 10 minute walk to the centre of Canary Wharf, is this modern 4 bed, 2 bath apartment spanning 747 sqft (approx).

- Modern Interior
- Wood Flooring Throughout
- Close To Transport

# The Bespoke Agent™



# The Bespoke Agent™



# The Bespoke Agent™

Located on Grundy Street, moments from Westferry DLR and only a 10 minute walk to the centre of Canary Wharf, is this modern 4 bed, 2 bath apartment spanning 747 sqft (approx).

Complete with wood flooring throughout, this bright, modern, second floor apartment boasts 4 double bedroom, each providing ample storage and natural light, two shower rooms and a high spec open plan kitchen complete with integrated appliances alongside the spacious living/dining area.

Conveniently situated just a 10-minute walk from Canary Wharf Centre, this property offers easy access to a variety of amenities. Westferry DLR station only 7 minutes away, All Saints DLR station is a mere 2-minute walk, and Poplar DLR station is just 5 minutes away, ensuring smooth connections to key areas across London.

**Available From:** Thursday 30th April 2026

**Furnishing:** Furnished

**Parking:** N/A

**Local Authority:** Tower Hamlets

**Council Tax Band:** B

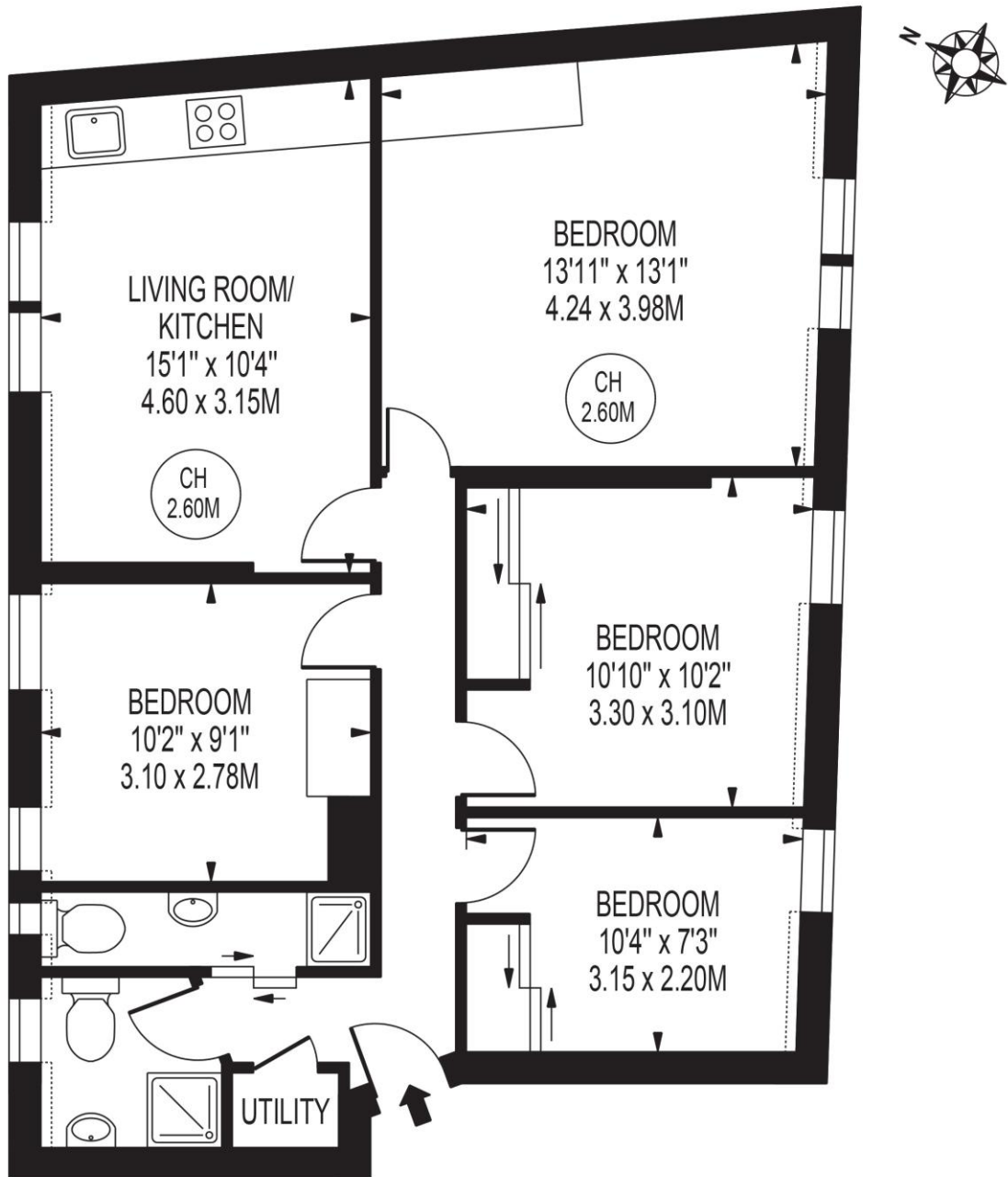
# The Bespoke Agent™



## HECKFORD HOUSE

APPROXIMATE TOTAL INTERNAL FLOOR AREA: 747 SQ FT - 69.40 SQ M  
(INCLUDING RESTRICTED HEIGHT AREA)

APPROXIMATE GROSS INTERNAL FLOOR AREA OF RESTRICTED HEIGHT: 13 SQ FT - 1.23 SQ M



## SECOND FLOOR

FOR ILLUSTRATION PURPOSES ONLY

THIS FLOOR PLAN SHOULD BE USED AS A GENERAL OUTLINE FOR GUIDANCE ONLY AND DOES NOT CONSTITUTE IN WHOLE OR IN PART AN OFFER OR CONTRACT.  
ANY INTENDING PURCHASER OR LESSEE SHOULD SATISFY THEMSELVES BY INSPECTION, SEARCHES, ENQUIRIES AND FULL SURVEY AS TO THE CORRECTNESS OF EACH STATEMENT.  
ANY AREAS, MEASUREMENTS OR DISTANCES QUOTED ARE APPROXIMATE AND SHOULD NOT BE USED TO VALUE A PROPERTY OR BE THE BASIS OF ANY SALE OR LET.