



Manhattan Loft Gardens E20

Leasehold
1 Bed 1 Bath
605 sqft (approx.)

Set on the 30th floor within the iconic Manhattan Loft Gardens, this design led 1-bedroom, 1-bathroom apartment offers a rare opportunity to experience sky-high living in one of London's most striking architectural landmarks. Designed by SOM Architects, the 42-storey tower stands out with its cantilevered structure and three sky gardens offering breath taking City views, blending loft-style living with five-star hotel amenities.

- 30th floor
- 5* building amenities
- Three resident sky gardens

The Bespoke Agent™



The Bespoke Agent™

Manhattan Loft Gardens offers more than just a home—it provides a lifestyle experience. The building's unique design fosters a community feel, while the curated events, exclusive dining experiences, and boutique hotel services make it a truly one-of-a-kind address. Each apartment has been meticulously designed to offer a seamless combination of elegance and functionality.

Spanning approximately 605 sqft, this exceptional apartment seamlessly blends modern luxury and charm and being situated on the 30th floor, the South facing views across the City are incredible.

The open-plan kitchen and living area is beautifully framed by floor-to-ceiling windows, providing volume and natural light. Designed with convenience in mind, the sleek, dark grey kitchen is fitted with fully integrated Siemens appliances which is further complemented by light grey stone worktops, offering both form and function. Bespoke cabinetry throughout the kitchen and bedroom provides ample built-in storage.

Residents have access to a state-of-the-art gym and wellness suite, private lounge/bar, plus access to The Stratford's hotel services including concierge, housekeeping and in-room dining. There are even additional Resident only Perks available that include discounts with luxury retailers and privately hosted events.

Quality finishes extend through to the main bathroom that features high-end fixtures, a rainfall shower over bath, and minimalist porcelain tiles, adding to the apartment's refined and contemporary appeal.

Situated in the heart of East London, Manhattan Loft Gardens offers unrivalled access to Stratford International Station, providing direct links to King's Cross in 7 minutes and Canary Wharf in 8 minutes.

The nearby Westfield Stratford City offers world-class shopping, dining, and entertainment options. Residents are also within the famed 560-acre Queen Elizabeth Olympic Park, known for its sustainably designed parklands and progressive mix of retail, leisure, waterways, and sporting venues.

Tenure: Leasehold

Lease Length: 250 years

Service Charge: £4,885 per annum (approx.)

Ground Rent: £350 per annum (approx.)

Parking: N/A

Local Authority: Newham London Borough Council

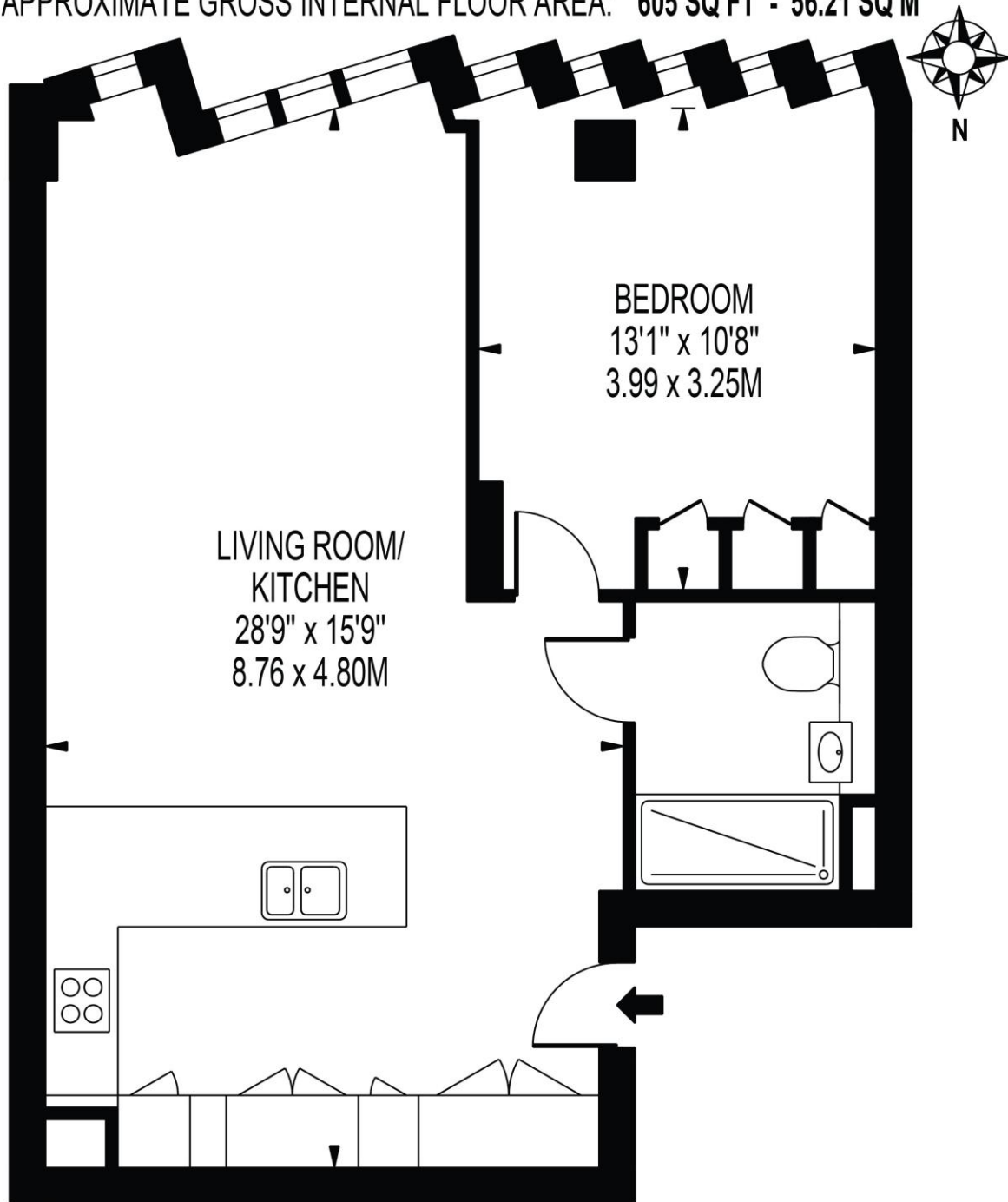
Council Tax Band: TBC

The Bespoke Agent™



MANHATTAN LOFT APARTMENTS

APPROXIMATE GROSS INTERNAL FLOOR AREA: 605 SQ FT - 56.21 SQ M



THIRTIETH FLOOR

FOR ILLUSTRATION PURPOSES ONLY

THIS FLOOR PLAN SHOULD BE USED AS A GENERAL OUTLINE FOR GUIDANCE ONLY AND DOES NOT CONSTITUTE IN WHOLE OR IN PART AN OFFER OR CONTRACT. ANY INTENDING PURCHASER OR LESSEE SHOULD SATISFY THEMSELVES BY INSPECTION, SEARCHES, ENQUIRIES AND FULL SURVEY AS TO THE CORRECTNESS OF EACH STATEMENT. ANY AREAS, MEASUREMENTS OR DISTANCES QUOTED ARE APPROXIMATE AND SHOULD NOT BE USED TO VALUE A PROPERTY OR BE THE BASIS OF ANY SALE OR LET.