



Narrow Street E14

Share of Freehold
2 Bed 2 Bath
2248 sqft (approx)

One of London's original and authentic lofts, where industrial heritage meets modern artistry. A spectacular 2,248 sq ft (approx.) masterpiece carved into the heart of Limehouse Wharf, a Grade II listed Victorian warehouse on Narrow Street, E14.

Once a bustling storehouse for London's thriving lime trade, this 1840s dockside building was reimagined in 1978 as one of the city's very first residential warehouse conversions – and with just four apartments, each claiming its own entire floor, it remains as rare as it is remarkable.

- Lateral loft
- Dock & River Views
- Original character throughout

The Bespoke Agent™



The Bespoke Agent™

Occupying the first floor, this 2 bedroom, 2 bathroom lateral loft is a raw yet refined celebration of true industrial character: towering steel columns, sun-aged brickwork, lightly oiled timber floors, and exposed beams create an immersive backdrop for modern living. Complete with ceilings close to 10ft (approx.), a full-length wall of original warehouse windows and operable loading doors that flood the vast living space with light and peaceful framed views across Limekiln Dock to the Thames beyond.

Inside, the loft unfolds dramatically via a large entrance hall which draws you straight into the vast open-plan living and dining space. A hand-crafted open plan kitchen is cleverly positioned in the far corner maximizing the huge open living/entertaining/dining area, fully fitted with integrated wine fridge, double American fridge/freezer, electric hob and cooker and an abundance of storage – made for both everyday life and impromptu gatherings. There is also a tucked away concealed pantry and utility room, keeping the working elements of the loft separate from the main space.



The Bespoke Agent™

Flexibility is built into the design, with a bathroom off the hall and good sized second double bedroom, featuring original Crittall windows and full length built in wardrobes. The principle bedroom is an impressive room, 25ft (approx.) in length, showcasing another original loading door, exposed brickwork and high ceilings with full length built in wardrobes. There is also a large fully tiled ensuite bathroom complete with sunken bath.

Outside, Narrow Street feels like stepping back into a quieter tucked away part of London. Riverside walks along the Thames Path lead to Wapping and St Katharine Docks, while centuries-old pubs like The Grapes and The Prospect of Whitby whisper stories of the city's maritime past. Canary Wharf lies just moments away, and the City is within easy reach via Westferry DLR. A timeless industrial original loft – reimagined with scale, and soul.

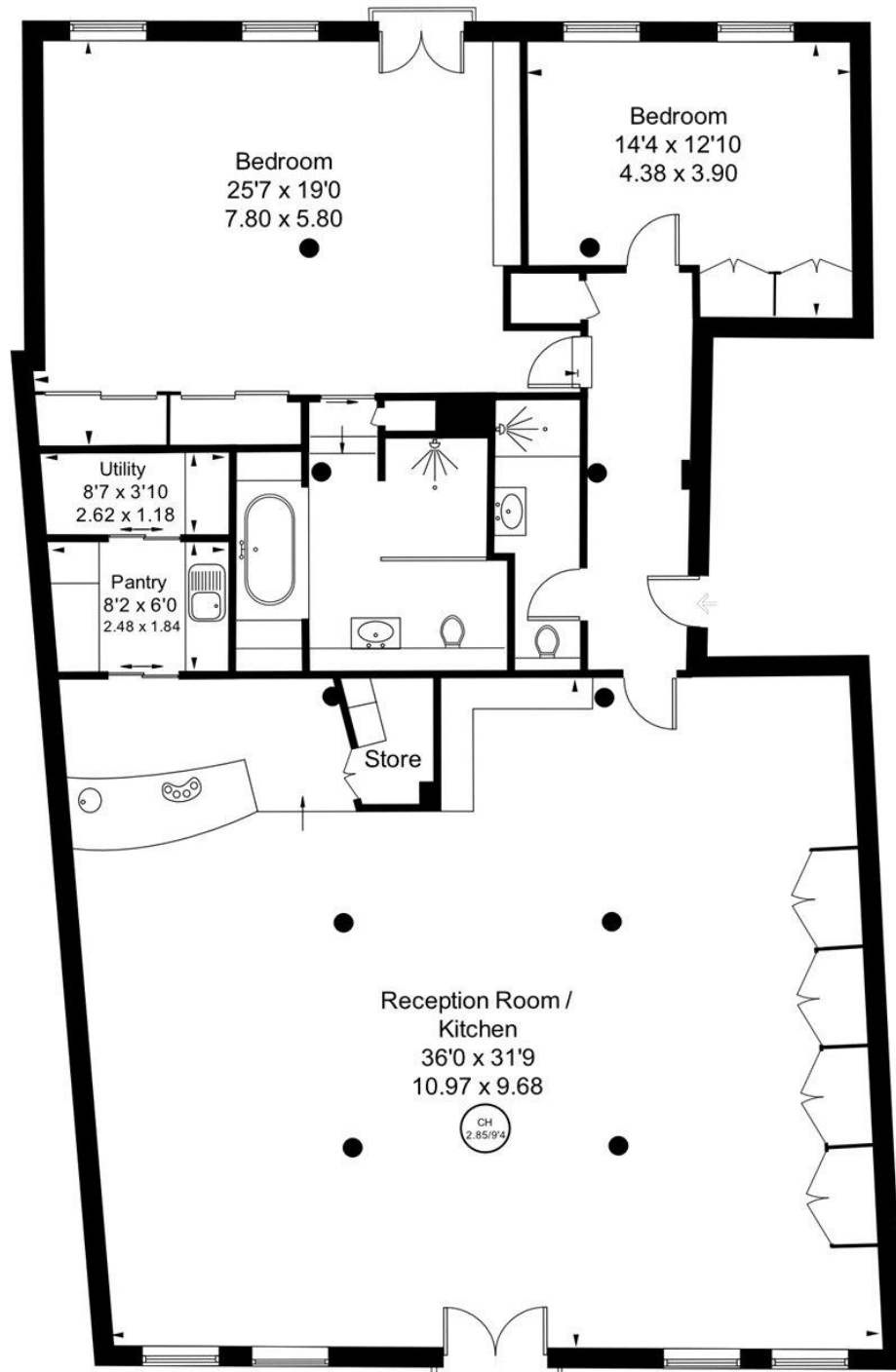
Tenure: Share of Freehold
Lease Length: 951 years and 5 months
Service Charge: £3,145 per annum (approx.)
Ground Rent: £0 per annum (approx.)
Parking: On-street via permit
Local Authority: Tower Hamlets
Council Tax Band: F

The Bespoke Agent™



Narrow Street, E14

Approximate Gross Internal Area
First Floor = 2248 sq ft / 208.88 sq m



First Floor

This plan is for layout guidance only. Not drawn to scale unless stated. Windows and door openings are approximate. Whilst every care is taken in the preparation of this plan, please check all dimensions, shapes and compass bearings before making any decisions reliant upon them.