



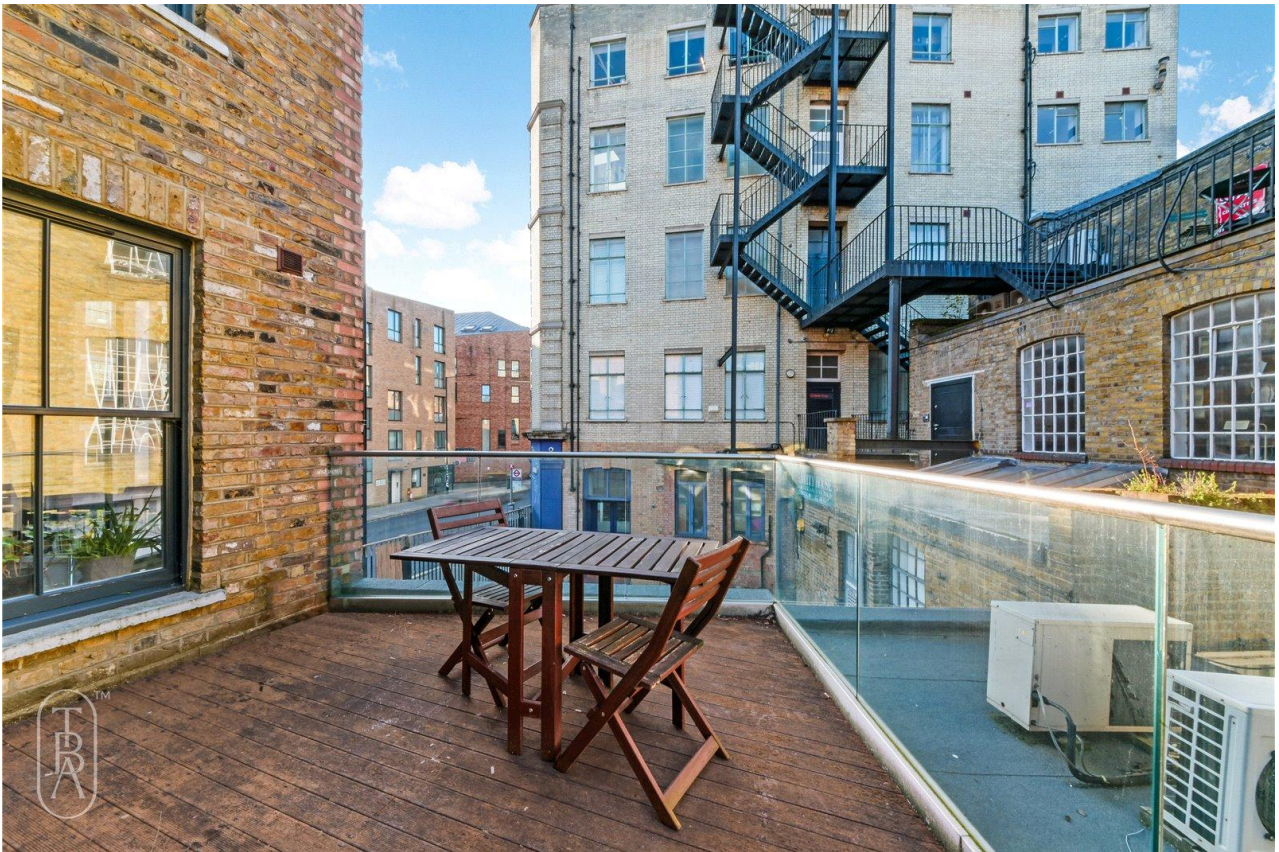
## Hackney Road E2

1 Bed 1 Bath  
601 sqft (approx.)

Set within a boutique development of just five apartments on Hackney Road, this beautifully presented one-bedroom apartment extends to approximately 600 sqft and benefits from a large private terrace.

- Boutique Development
- Private Terrace
- Wood Flooring Throughout

# The Bespoke Agent™



# The Bespoke Agent™

Finished to a high standard throughout, the apartment combines clean contemporary design with an abundance of natural light. The spacious semi open-plan living area features oak flooring, large sash windows and direct access onto the terrace, creating an ideal space for both relaxing and entertaining. The adjoining kitchen is fully fitted with integrated appliances and generous worktop space.

The double bedroom is well proportioned and includes built-in storage, whilst the bathroom has been stylishly finished with contemporary fittings and includes both a bath and overhead shower.



# The Bespoke Agent™

Perfectly positioned between Shoreditch, Hoxton and Columbia Road, the apartment is moments from some of East London's best cafés, restaurants and independent shops. Columbia Road Flower Market is quite literally on the doorstep, alongside local favourites including Brawn, Campania and The Royal Oak.

Hoxton and Shoreditch High Street Overground stations are both within easy walking distance, whilst Old Street station can be reached in approximately 15 minutes.

**Available From:** Friday 19th June 2026

**Furnishing:** Unfurnished

**Parking:** N/A

**Local Authority:** Hackney Council

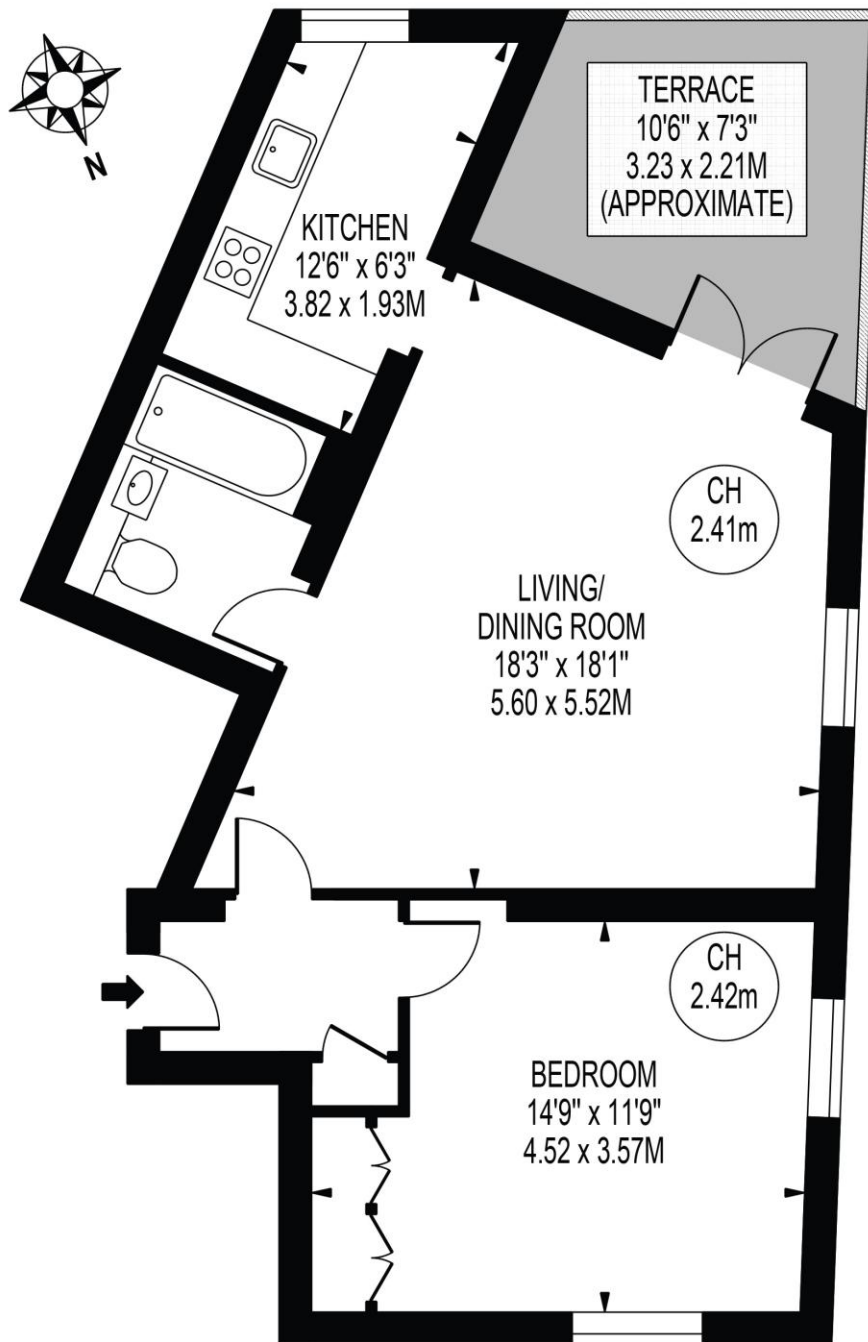
**Council Tax Band:** C

# The Bespoke Agent™



## HACKNEY ROAD

APPROXIMATE GROSS INTERNAL FLOOR AREA: 601 SQ FT - 55.86 SQ M



### FIRST FLOOR

FOR ILLUSTRATION PURPOSES ONLY

THIS FLOOR PLAN SHOULD BE USED AS A GENERAL OUTLINE FOR GUIDANCE ONLY AND DOES NOT CONSTITUTE IN WHOLE OR IN PART AN OFFER OR CONTRACT. ANY INTENDING PURCHASER OR LESSEE SHOULD SATISFY THEMSELVES BY INSPECTION, SEARCHES, ENQUIRIES AND FULL SURVEY AS TO THE CORRECTNESS OF EACH STATEMENT. ANY AREAS, MEASUREMENTS OR DISTANCES QUOTED ARE APPROXIMATE AND SHOULD NOT BE USED TO VALUE A PROPERTY OR BE THE BASIS OF ANY SALE OR LET.