



## Oakley House SW11

1 Bed 1 Bath  
477 sqft (approx)

Situated on the 6th floor of Oakley House, within the grounds of the iconic Battersea Power Station development is this stylishly presented studio apartment spanning 477 sqft (approx).

- New Development
- 24 Hour Concierge
- Winter Garden

# The Bespoke Agent™



# The Bespoke Agent™

Finished to an excellent standard throughout, with crisp white walls and wood flooring, you make your way into the apartment where the modern bathroom is placed on your immediate right and boasts an enviable walk-in shower whilst the adjacent utility room benefits from ample storage.

The 'bedroom' has been neatly tucked away with a partition to create a secure space and includes a vast amount of built in storage.

Moving into the living area, the open plan kitchen has been elegantly designed with state-of-the-art integrated appliances, whilst the open and airy lounge caters for both dining and relaxation. The versatile Winter Garden can be utilised as a second 'snug' and provides views of some of Southwest London's newest developments.

Residents at Oakley House benefit from 24-hour concierge, gym and access to the sky lounge. With the Electric Boulevard on your doorstep alongside the endless amenities within the Power Station, you will never be in short supply of things to do. Some of the finest local restaurants include Wright Brothers and Vagabond's to name a few. You'll also find a plethora of clothing shops, coffee hot spots and the soon to open Third Space .

Battersea Power Stations tube line provides incredibly quick and easy access to the City via the Northern line service. Alternatively the nearby Vauxhall station provides underground (Victoria line) and overground train services to Clapham Junction, Waterloo, and international airports.

**Available From:** Wednesday 01st May 2024

**Furnishing:** Furnished

**Parking:** N/A

**Local Authority:** Borough of Wandsworth

**Council Tax Band:** E

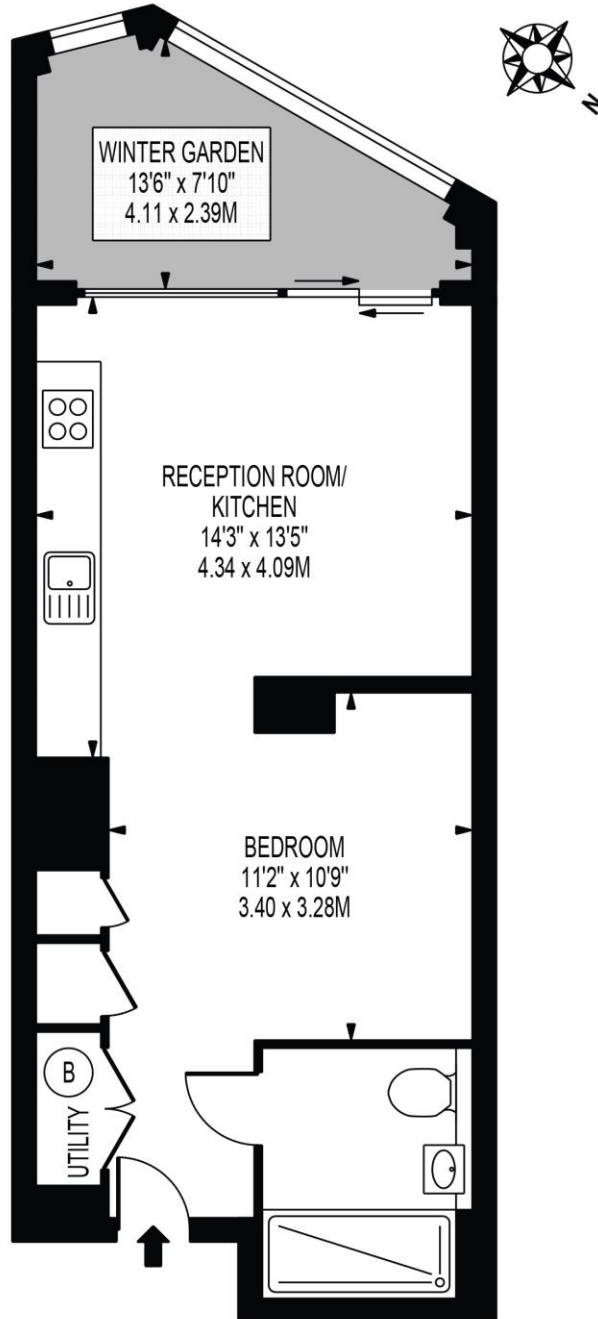
# The Bespoke Agent™



## OAKLEY HOUSE, ELECTRIC BOULEVARD

APPROXIMATE TOTAL INTERNAL FLOOR AREA: 477 SQ FT - 44.31 SQ M  
(INCLUDING WINTER GARDEN)

APPROXIMATE GROSS INTERNAL FLOOR AREA OF WINTER GARDEN: 76 SQ FT - 7.06 SQ M



SIXTH FLOOR  
FOR ILLUSTRATION PURPOSES ONLY

THIS FLOOR PLAN SHOULD BE USED AS A GENERAL OUTLINE FOR GUIDANCE ONLY AND DOES NOT CONSTITUTE IN WHOLE OR IN PART AN OFFER OR CONTRACT.  
ANY INTENDING PURCHASER OR LESSEE SHOULD SATISFY THEMSELVES BY INSPECTION, SEARCHES, ENQUIRIES AND FULL SURVEY AS TO THE CORRECTNESS OF EACH STATEMENT.  
ANY AREAS, MEASUREMENTS OR DISTANCES QUOTED ARE APPROXIMATE AND SHOULD NOT BE USED TO VALUE A PROPERTY OR BE THE BASIS OF ANY SALE OR LET.