



Hackney Road E2

1 Bed 1 Bath
406 sqft (approx)

Located within a recently refurbished Georgian house towards the top end of Hackney Road is this incredibly stylish one bedroom/semi-studio south-facing garden apartment spanning 406 (approx.).

- Victorian Conversion
- Large Private Garden
- Close To Public Transport

The Bespoke Agent™



The Bespoke Agent™

Natural light floods this lower floor dual aspect apartment from the floor-to-ceiling bi-folding doors that lead out to the private lawned garden and patio. The modern open plan kitchen combines plenty of space for dining as well as built-in storage for cooking essentials plus fully integrated appliances. There is a fully tiled shower-room which comes equipped with an overhead walk-in waterfall shower and heated towel rail. The double bedroom is set towards the rear of the apartment which is larger than average and has plenty of space for additional storage.

The surrounding area provides a truly excellent selection of local restaurants, lunch spots, specialist coffee shops, and historic pubs namely Rouges, Morito, Ombra, Marksman Pub, and Nkora Coffee. Situated close just a 3 minute stroll from Cambridge Heath Road overground station, transport connections are simple and convenient and there is also a vast network of buses taking you into Shoreditch and central London.

Available From: Thursday 30th May 2024

Furnishing: Unfurnished

Parking: N/A

Local Authority: Tower Hamlets

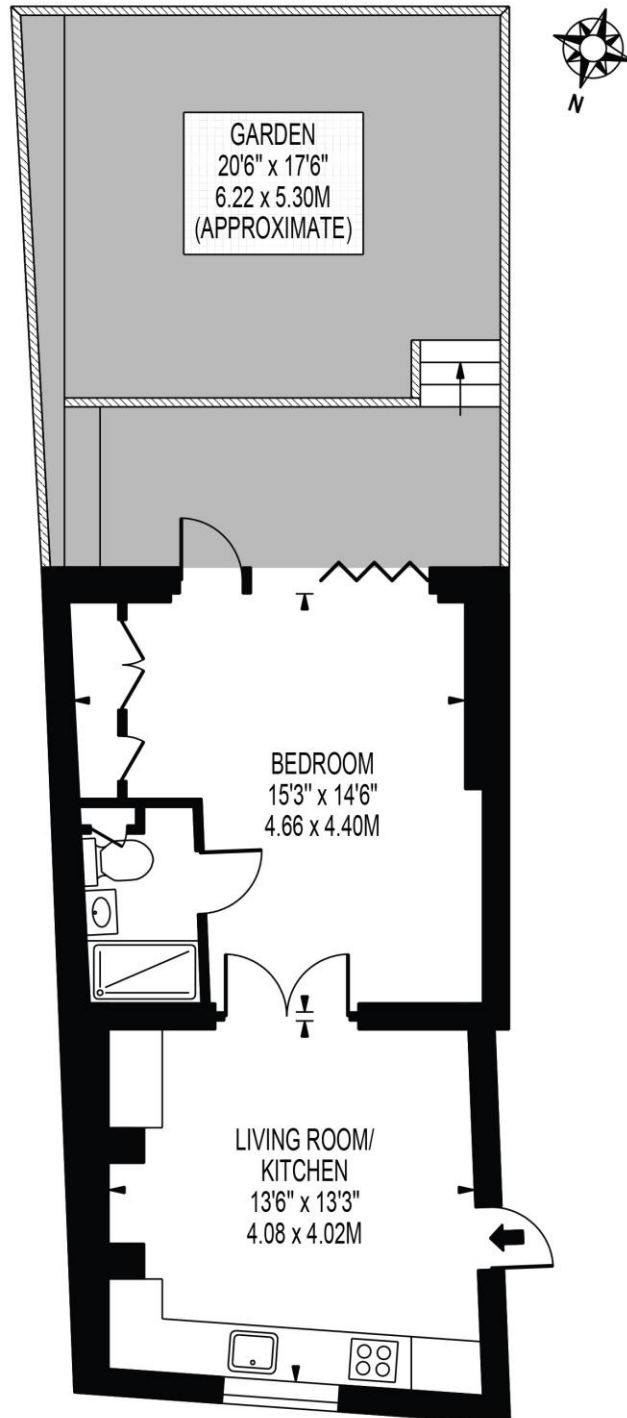
Council Tax Band: B

The Bespoke Agent™



HACKNEY ROAD

APPROXIMATE GROSS INTERNAL FLOOR AREA: 406 SQ FT - 37.75 SQ M



LOWER GROUND FLOOR
FOR ILLUSTRATION PURPOSES ONLY

THIS FLOOR PLAN SHOULD BE USED AS A GENERAL OUTLINE FOR GUIDANCE ONLY AND DOES NOT CONSTITUTE IN WHOLE OR IN PART AN OFFER OR CONTRACT. ANY INTENDING PURCHASER OR LESSEE SHOULD SATISFY THEMSELVES BY INSPECTION, SEARCHES, ENQUIRIES AND FULL SURVEY AS TO THE CORRECTNESS OF EACH STATEMENT. ANY AREAS, MEASUREMENTS OR DISTANCES QUOTED ARE APPROXIMATE AND SHOULD NOT BE USED TO VALUE A PROPERTY OR BE THE BASIS OF ANY SALE OR LET.