



Hoxton Square N1

1 Bed 2 Bath
1094 sqft (approx)

Refinished to an impeccable specification and occupying the entire top floor of a large imposing former Victorian school building on the popular Hoxton Square, this Penthouse apartments is like no-other on the open market.

- Unique Penthouse
- 560 sqft (approx) private terrace
- Direct lift access

The Bespoke Agent™



The Bespoke Agent™

Spanning just under 1,100 sqft (approx.) with a c.13 meter wide private decked terrace, the Penthouse benefits from South facing views out across not only the tree-lined canopy of the square but also the rooftops of Shoreditch out towards the City.

Directly accessed via lift into an entrance hallway that features a fully tiled shower-room and a plethora of built in storage, the solid timber floorboards and modern fixtures & fittings flow throughout. Head up the stairs, the views and sheer open plan layout provide incredible City living accommodation.

All-important air-conditioning cool the Penthouse in warmer summer months and the floor to ceiling bi-folding doors retract, extending the already stunning living space to the outside. The design-led island kitchen set to one side is clad with fully integrated appliances from Neff and must have 5 ring gas fired hob, all illuminated by the large skylight and recessed lighting.

Sleeping accommodation comprises of a large double bedroom with slatted designer glazing and built-in wardrobes. A second bathroom (en-suite to the bedroom) showcases a walk-in raindrop shower which can be enjoyed with views the skylight of the stars. There's a separate guest area/study off the living space which is divided by a purpose built, sliding door - perfect for a WFH set up or when friends stay.

Hoxton Square is an area of Shoreditch that has become one of the most desirable Squares of East London owing to its rich mix of popular nearby restaurants, art scene, fashion houses and vibrancy.

Available From: Monday 01st September 2025

Furnishing: Part Furnished

Parking: On-street via permit

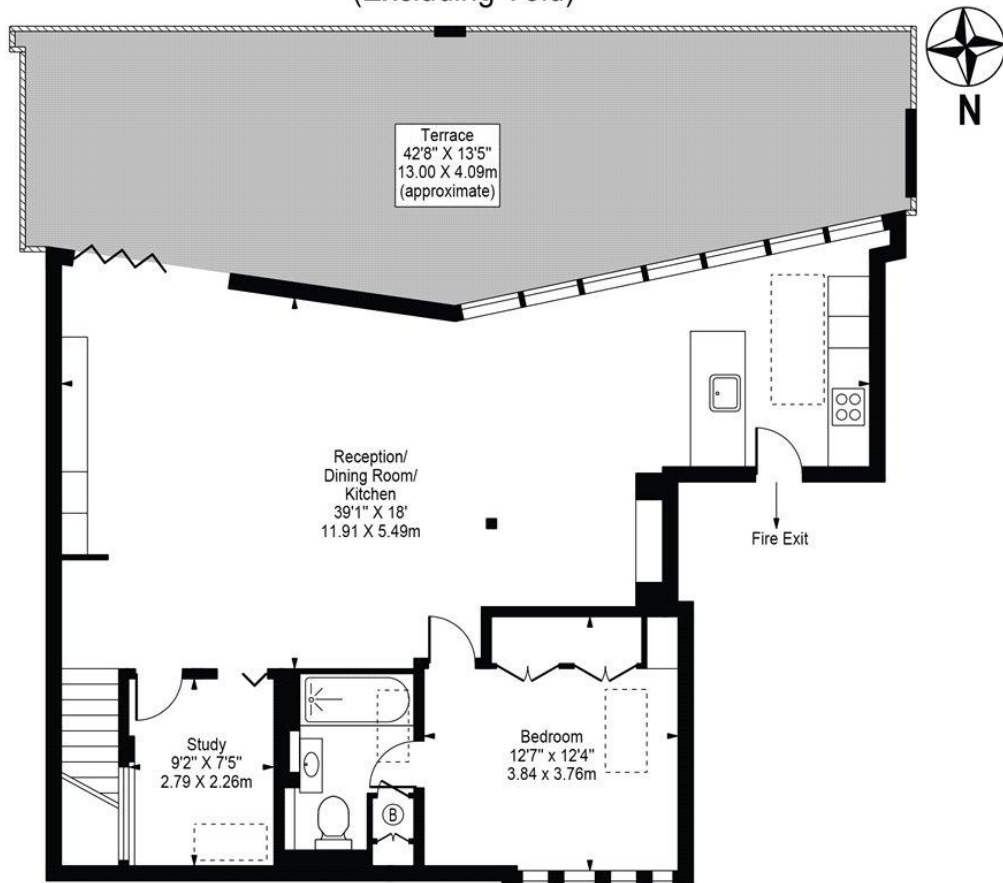
Local Authority: Hackney Council

Council Tax Band: E

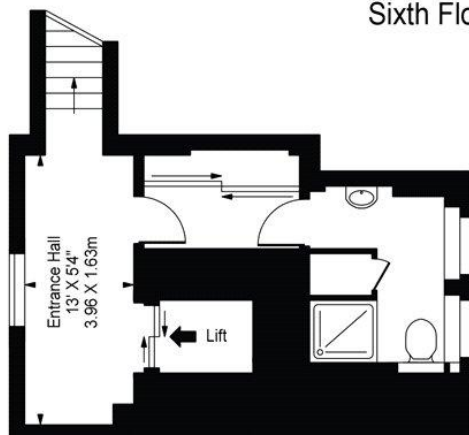
The Bespoke Agent™



Penthouse, Hoxton Square Approx. Gross Internal Area 1094 Sq Ft - 101.64 Sq M (Excluding Void)



Sixth Floor



Fifth Floor

For Illustration Purposes Only - Not To Scale

This floor plan should be used as a general outline for guidance only and does not constitute in whole or in part an offer or contract. Any intending purchaser or lessee should satisfy themselves by inspection, searches, enquiries and full survey as to the correctness of each statement. Any areas, measurements or distances quoted are approximate and should not be used to value a property or be the basis of any sale or let.