



## Old Nichol Street E2

2 Bed 1 Bath  
704 sqft (approx)

Situated on the 1st floor of an original Victorian warehouse conversion, this circa 704 sq ft lateral apartment is located on Old Nichol Street.

Comprising of two double bedrooms, a fully tiled three piece bathroom and a good sized, south facing, open plan kitchen/dining/living room with access to a private rear terrace, the apartment provides perfectly practical accommodation right in the mix of it all.

- Warehouse apartment
- Private terrace
- Central location

# The Bespoke Agent™



# The Bespoke Agent™

Finished to a good standard with modern fixtures and fittings throughout, the apartment also features oak wood flooring, white washed brickwork and good ceiling height. Off one of the double bedrooms there is even an original loading door looking out to the Arnold Circus.

Old Nichol Street runs parallel to Redchurch Street, making this tucked away warehouse only a block away from all the action of Brick Lane and Shoreditch putting it in a great spot for those that enjoy a busy street scene but also a quiet night in.

With the Boundary Rooftop, Shoreditch House, Cecconis and an ever changing array of new and exciting restaurants, bars and shops all around the corner there is no shortage Shoreditch High Street Overground is less than a 2 minute walk and Liverpool St is a 10 min walk down nearby Bishopsgate.

Available From: Tuesday 02nd April 2024

Furnishing: Unfurnished

Parking: N/A

Local Authority: Tower Hamlets

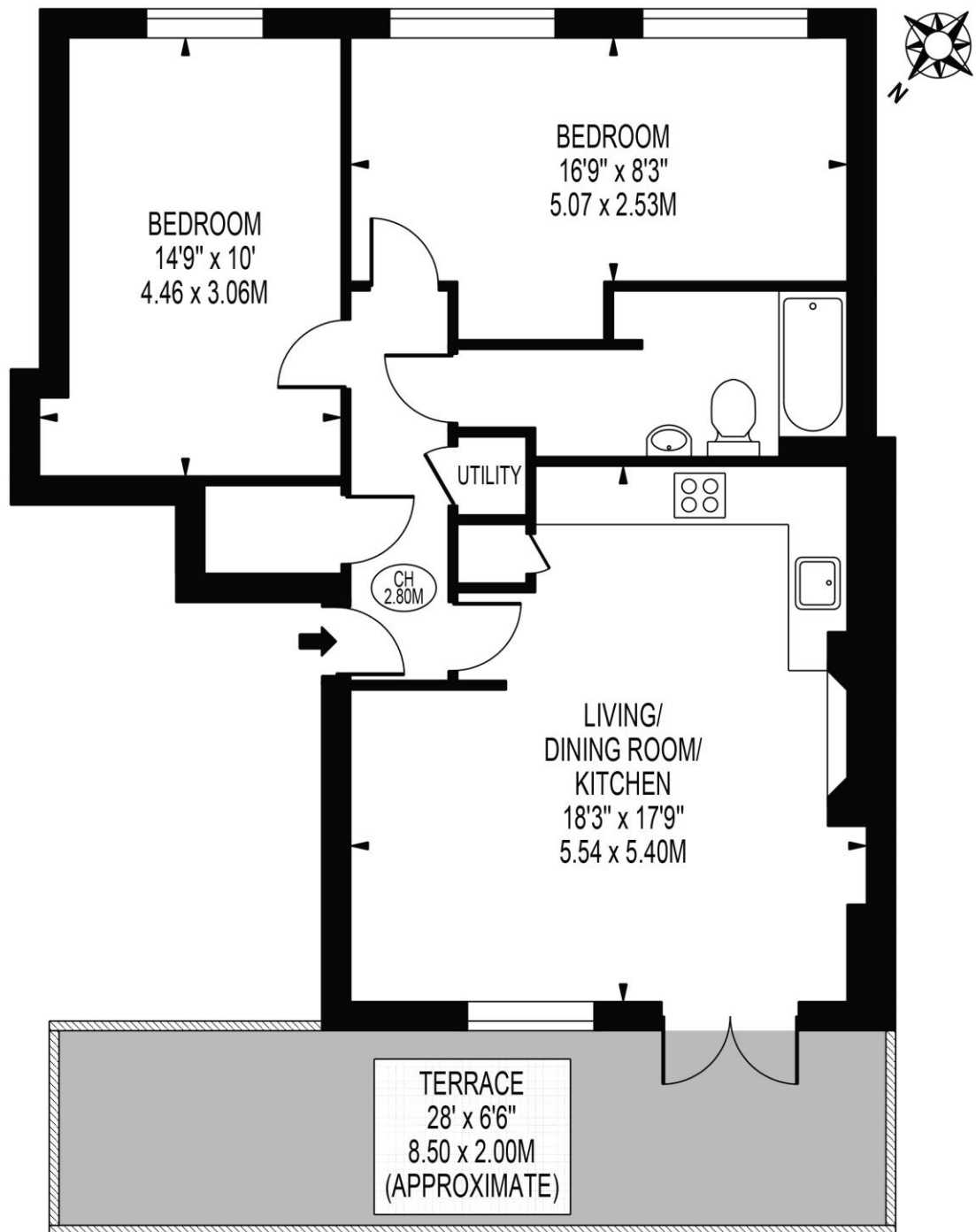
Council Tax Band: D

# The Bespoke Agent™



## JAGO APARTMENTS

APPROXIMATE GROSS INTERNAL FLOOR AREA: 704 SQ FT - 65.36 SQ M



### FIRST FLOOR

FOR ILLUSTRATION PURPOSES ONLY

THIS FLOOR PLAN SHOULD BE USED AS A GENERAL OUTLINE FOR GUIDANCE ONLY AND DOES NOT CONSTITUTE IN WHOLE OR IN PART AN OFFER OR CONTRACT. ANY INTENDING PURCHASER OR LESSEE SHOULD SATISFY THEMSELVES BY INSPECTION, SEARCHES, ENQUIRIES AND FULL SURVEY AS TO THE CORRECTNESS OF EACH STATEMENT. ANY AREAS, MEASUREMENTS OR DISTANCES QUOTED ARE APPROXIMATE AND SHOULD NOT BE USED TO VALUE A PROPERTY OR BE THE BASIS OF ANY SALE OR LET.