

Chapel Place EC2A

2 Bed 2 Bath
849 sqft (approx)

Situated in the very centre of the Shoreditch Triangle on Rivington Street is this 2 bed 2 bath split level converted warehouse apartment spanning 849 sqft (approx).

- Warehouse conversion
- Split level
- Shoreditch triangle location

The Bespoke Agent™



The Bespoke Agent™

Situated in the very centre of the Shoreditch Triangle on Rivington Street is this 2 bed 2 bath split level converted warehouse apartment spanning 849 sqft (approx).

Finished to a quality standard throughout with high, beamed ceilings on the upper floor and plenty of natural light flowing through.

Rivington Street is notorious for its excellent restaurants with Bottega and Blacklock being firm local favourites.

Within close walking distance to both Old Street and London Liverpool Street Station.

Available From: Monday 25th May 2026

Furnishing: Part Furnished

Parking: Car-free development

Local Authority: Hackney Council

Council Tax Band: D

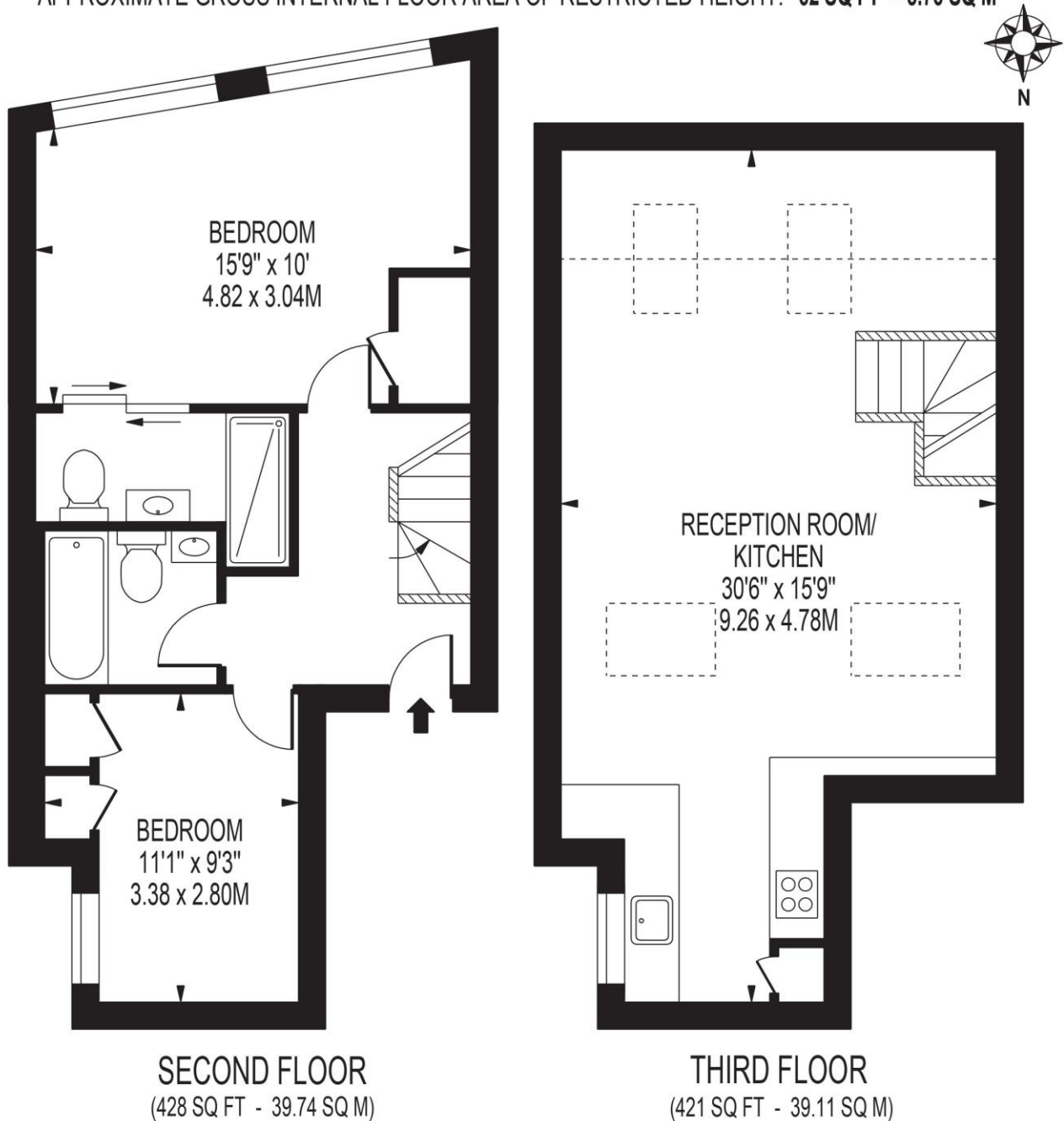
The Bespoke Agent™



RIVINGTON STREET

APPROXIMATE TOTAL INTERNAL FLOOR AREA: **849 SQ FT - 78.85 SQ M**
(INCLUDING RESTRICTED HEIGHT AREA)

APPROXIMATE GROSS INTERNAL FLOOR AREA OF RESTRICTED HEIGHT: **62 SQ FT - 5.76 SQ M**



FOR ILLUSTRATION PURPOSES ONLY

THIS FLOOR PLAN SHOULD BE USED AS A GENERAL OUTLINE FOR GUIDANCE ONLY AND DOES NOT CONSTITUTE IN WHOLE OR IN PART AN OFFER OR CONTRACT.
ANY INTENDING PURCHASER OR LESSEE SHOULD SATISFY THEMSELVES BY INSPECTION, SEARCHES, ENQUIRIES AND FULL SURVEY AS TO THE CORRECTNESS OF EACH STATEMENT.
ANY AREAS, MEASUREMENTS OR DISTANCES QUOTED ARE APPROXIMATE AND SHOULD NOT BE USED TO VALUE A PROPERTY OR BE THE BASIS OF ANY SALE OR LET.