



Chapel Place EC2A

Studio 1 Bath
570 sqft (approx)

Situated in the very centre of the Shoreditch Triangle on Rivington Street is this large studio apartment spanning c.570 sqft (approx) within Chapel Place, a converted former Victorian warehouse.

- Former warehouse building
- Exposed brickwork
- Central Shoreditch

The Bespoke Agent™



The Bespoke Agent™

Finished to a quality standard throughout with exposed brickwork and plenty of natural light flowing through the open plan space is a prime starter home in the middle of town.

Rivington Street is notorious for its excellent restaurants with Blacklock, Cricket and Dishoom being firm local favourites.

Transport connections are simple and convenient being within close walking distance to both Old Street and London Liverpool Street Station.



The Bespoke Agent™

Available From: Monday 10th August 2026

Furnishing: Unfurnished

Parking: Car-free development

Local Authority: Hackney Council

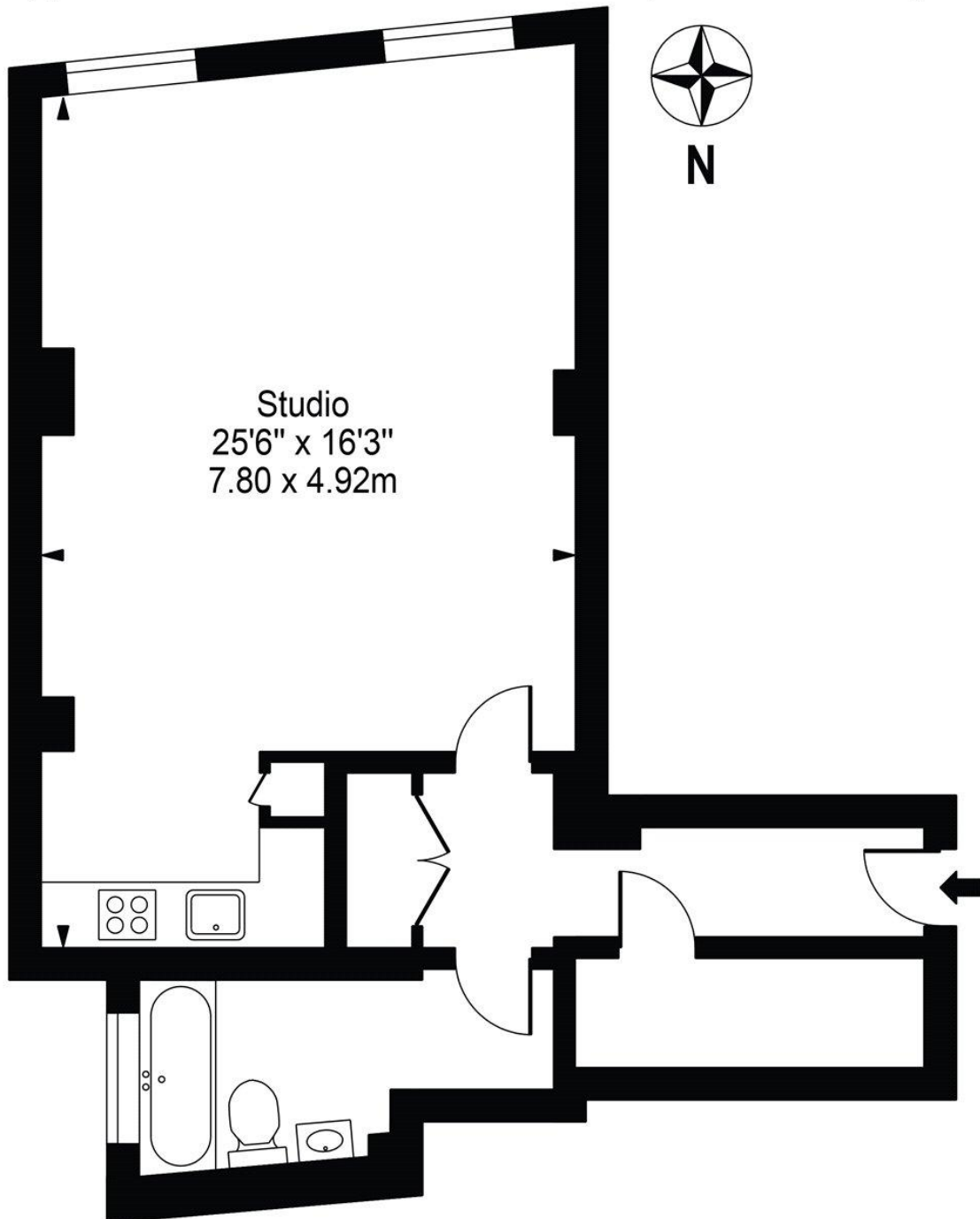
Council Tax Band: C

The Bespoke Agent™



Chapel Place

Approx. Gross Internal Area 570 Sq Ft - 52.92 Sq M



First Floor

For Illustration Purposes Only - Not To Scale

This floor plan should be used as a general outline for guidance only and does not constitute in whole or in part an offer or contract. Any intending purchaser or lessee should satisfy themselves by inspection, searches, enquiries and full survey as to the correctness of each statement. Any areas, measurements or distances quoted are approximate and should not be used to value a property or be the basis of any sale or let.