



## Boundary Street E2

2 Bed 2 Bath  
733 sqft (approx)

Situated on Boundary Street in prime central Shoreditch by the famous Redchurch Street, is this 2 bedroom, 2 bathroom apartment spanning 733 sqft (approx)

- Modern Development
- Large Balcony
- Close To Transport

# The Bespoke Agent™



# The Bespoke Agent™

Well fitted with oak flooring, underfloor heating, air conditioning and bespoke built in wardrobes, there are two double bedrooms (one with en-suite), large open plan kitchen in the living/dining room and two huge East facing windows allowing for an abundance of natural light. The building benefits from two communal roof terraces (one East and one South facing) and external storage big enough for bikes.

Set back off the main drag from Shoreditch High Street, this tucked away apartment is by all the action with some of the neighbouring hotspots including The Boundary Rooftop bar/restaurant, Shoreditch House and Dishoom.

Liverpool Street and Old Street stations are within walking distance alongside Shoreditch High Street overground being a 2 minute walk away

**Available From:** Monday 18th November 2024

**Furnishing:** Unfurnished

**Parking:** N/A

**Local Authority:** Hackney Council

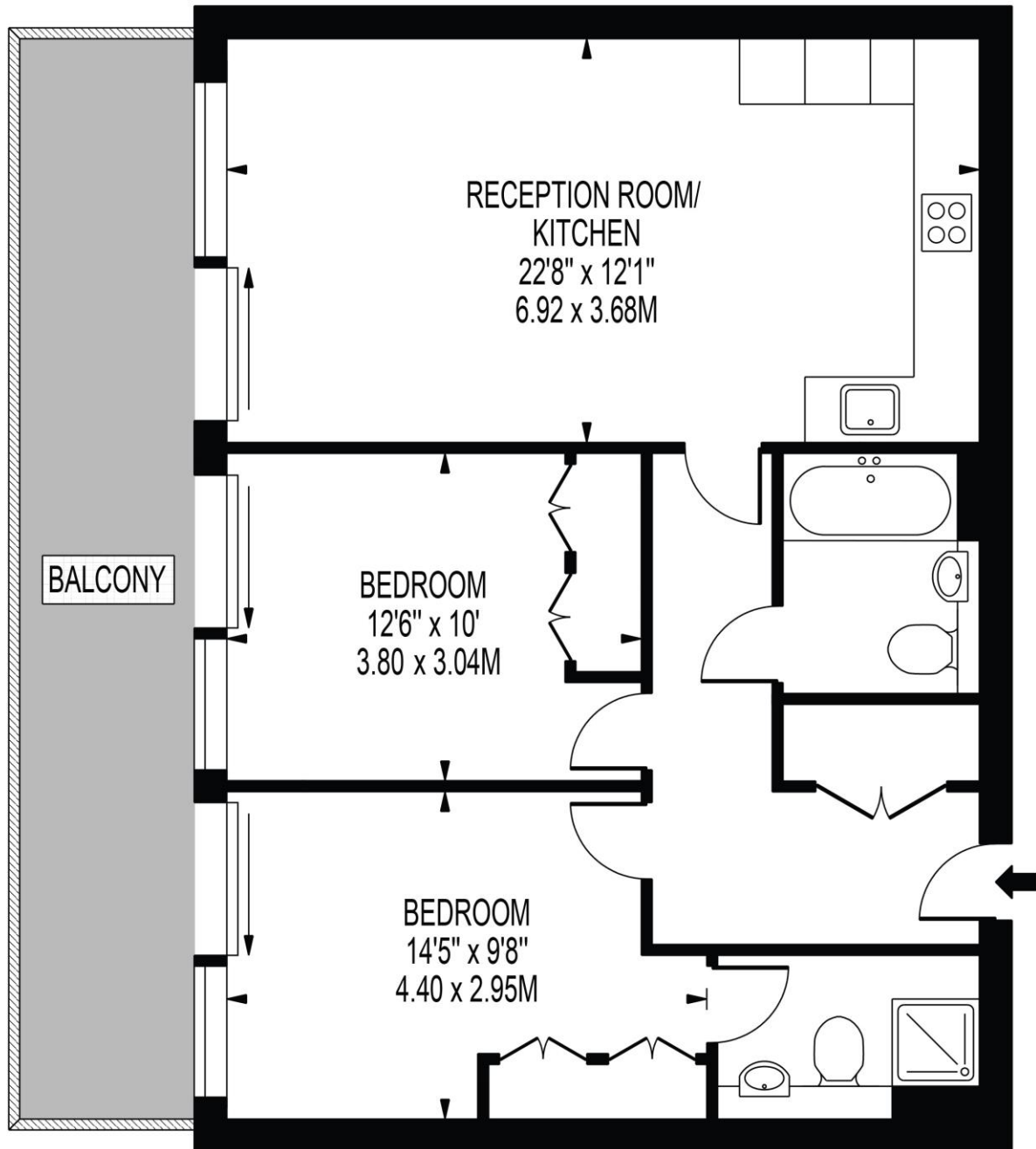
**Council Tax Band:** D

# The Bespoke Agent™



## BOUNDARY STREET

APPROXIMATE GROSS INTERNAL FLOOR AREA: 733 SQ FT - 68.07 SQ M



### THIRD FLOOR

FOR ILLUSTRATION PURPOSES ONLY

THIS FLOOR PLAN SHOULD BE USED AS A GENERAL OUTLINE FOR GUIDANCE ONLY AND DOES NOT CONSTITUTE IN WHOLE OR IN PART AN OFFER OR CONTRACT. ANY INTENDING PURCHASER OR LESSEE SHOULD SATISFY THEMSELVES BY INSPECTION, SEARCHES, ENQUIRIES AND FULL SURVEY AS TO THE CORRECTNESS OF EACH STATEMENT. ANY AREAS, MEASUREMENTS OR DISTANCES QUOTED ARE APPROXIMATE AND SHOULD NOT BE USED TO VALUE A PROPERTY OR BE THE BASIS OF ANY SALE OR LET.