



Redchurch Street E2

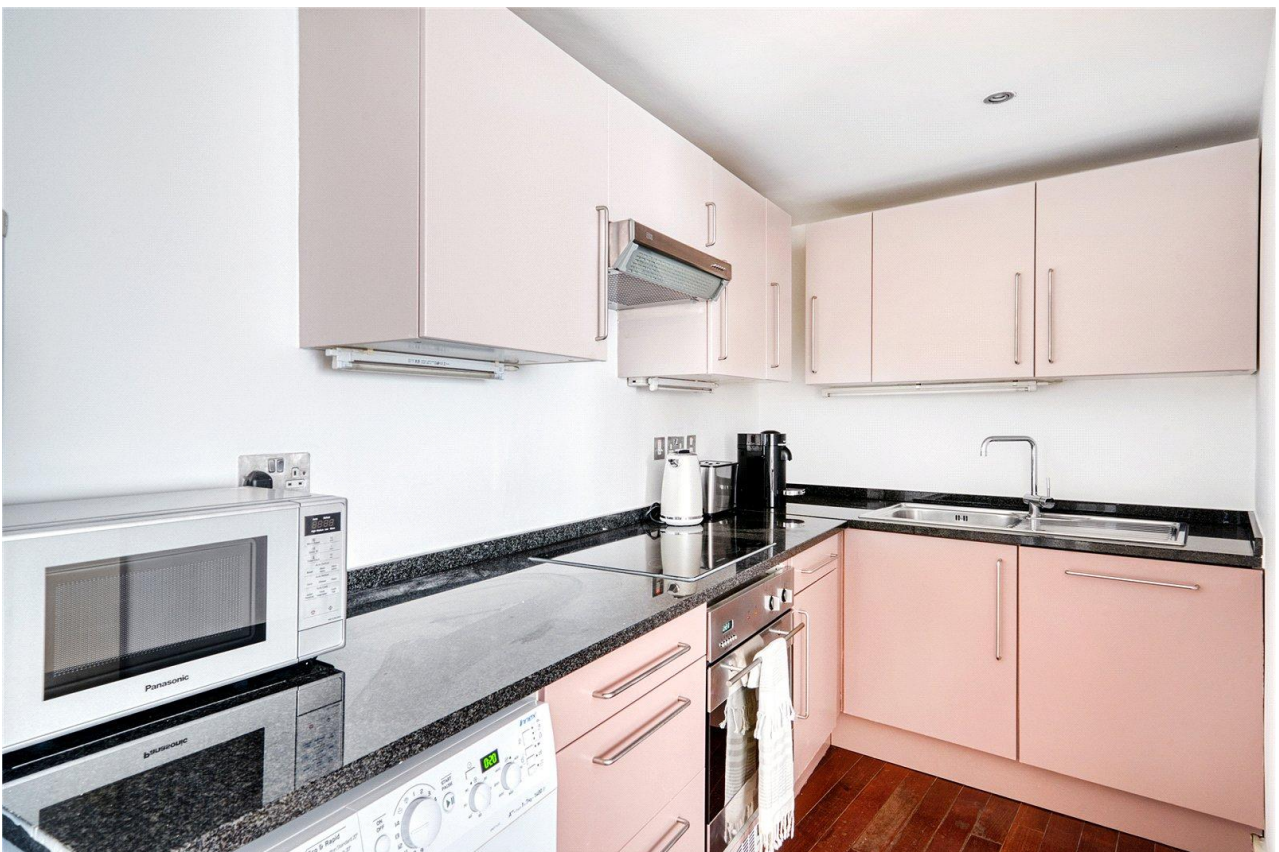
1 Bed 1 Bath
499 sqft (approx)

Well located semi-studio apartment on the ever popular Redchurch Street.

The main studio space has a fully fitted kitchen to one side which is practical for any cook with plenty of worktop space and storage, a dishwasher and fridge/freezer. Sleeping accommodation comprises of a sectioned off area by sliding door where there is also built in wardrobes.

- Popular location
- Modern apartment
- Lift access

The Bespoke Agent™



The Bespoke Agent™

The apartment is in a small block of just 14 other properties and located up on the 2nd floor, which is accessed via communal lift.

Redchurch Street is an area of Shoreditch popular due to it's selection of boutique shops including Timothy Everest & Nudie Jeans and selection of eateries, bars and restaurants such as Albion, Owl & Pussycat and the highly regarded AllPress for the coffee lovers.

Please note property has been staged and is available unfurnished.

Available From: Tuesday 02nd June 2026

Furnishing: Unfurnished

Parking: Car-free development

Local Authority: Tower Hamlets

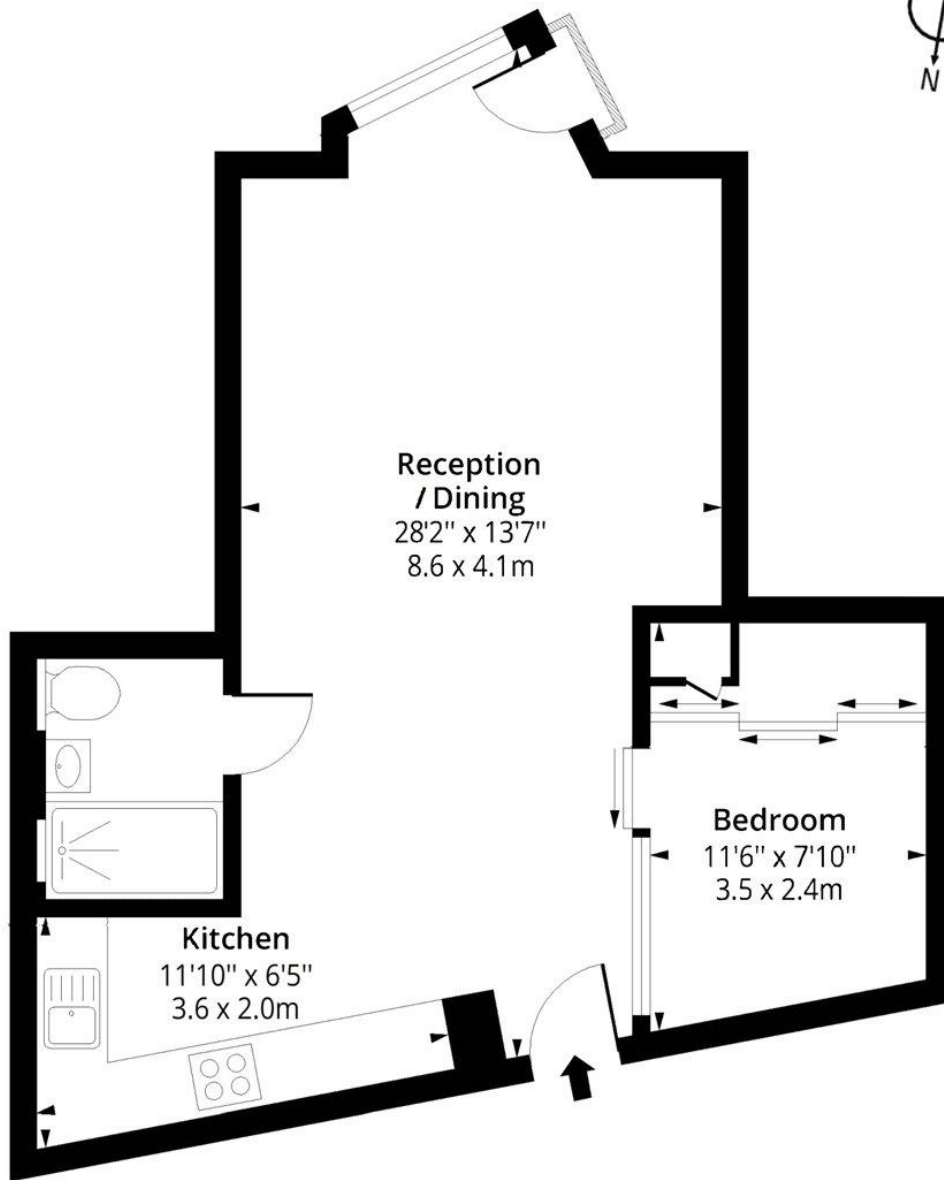
Council Tax Band: E

The Bespoke Agent™



REDCHURCH STREET E2

APPROXIMATE GROSS INTERNAL FLOOR AREA : 499 SQFT - 46 SQM



SECOND FLOOR