

Grange Road SE1

Freehold
5 Bed 3 Bath
4542 sqft (approx.)

A Grade II listed Georgian house built circa 1840 in SE1 just off Bermondsey Street by Borough High Street. Spanning over 4500 sqft (approx.) with 5 beds, 3 baths, 2 WCs and study, this palatial house has beautiful, preserved character throughout all four floors.

- Built 1840
- Grade II listed Georgian Townhouse
- Preserved historical features throughout

The Bespoke Agent™



The Bespoke Agent™

The house embraces the original marble fireplaces, cornicing, ceiling roses, large sash windows with stripped back shutters, stained glass windows, wide wood floorboards and stunning curved ornate mahogany staircase. With off street parking to the front along with three separate entrances and northeast facing rear garden, the size and scale of this freehold along with the abundance of original features, makes this a rare find.

Steeped in history, the house was lived and worked in by Dr Alfred Slater in the early 1900's who is known as 'the man who created the NHS before the NHS was created'. It was also used as a hospital during the First World War as was bought by the Bermondsey Medical Mission in 1946 for staff accommodation. In recent years, known as The Art House, the building has been used for many film and TV locations as well as photo shoots, gallery and event space.

The raised ground floor has an entrance and hallway with impressive sweeping staircase which leads to two reception rooms, study/library, storage room and WC, With additional front access to the lower ground floor (formerly the staff's entrance), is a large fully fitted kitchen and dining area which leads to the mature tiered level garden. On this floor is a snug lounge complete with log burner, laundry room with French doors out to the garden and a large cellar.



The Bespoke Agent™

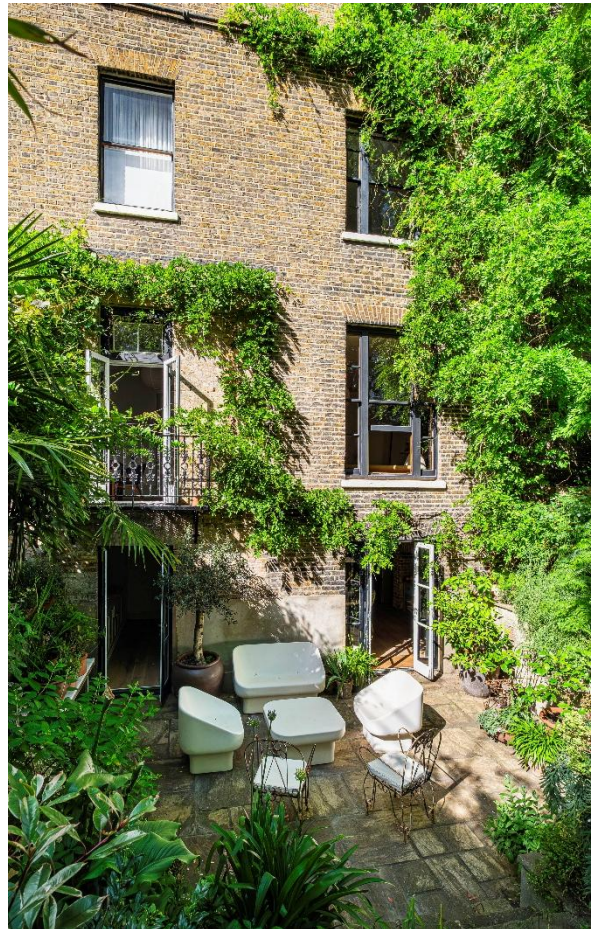
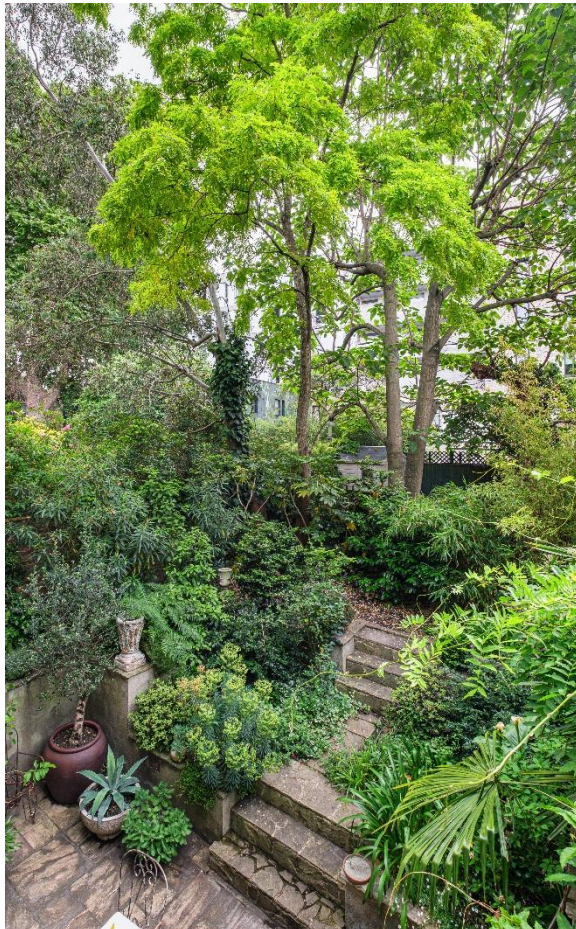
On the first floor are two large bedrooms both with en-suite bathrooms and an additional shower room, all accessed via the impressive landing. On the top (second floor) are three further rooms one of which is a large open plan space (perfect for a studio/workspace) with skylight and access to a large loft/roof, which could easily be split into two rooms.

Situated within minutes of Borough, London Bridge and Bermondsey stations, access across London is easy. The River Thames, The Shard, Tower Bridge and Bermondsey Street are all on the doorstep with a huge choice of galleries, venues, restaurants and pubs. A short walk away is Borough Market, which one of the largest and oldest food markets in London, along with Maltby Street Market which both offer a mix of eateries, artisan shops and pubs.



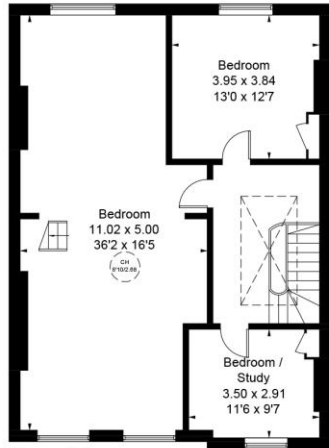
Tenure: Freehold
Parking: Off Street
Local Authority: Southwark
Council Tax Band: E

The Bespoke Agent™



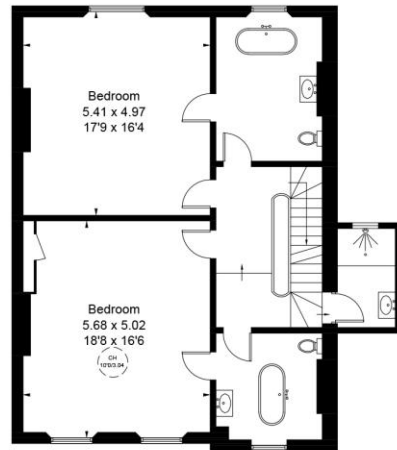
Grange Road, SE1

Approximate Gross Internal Area
 Lower Ground Floor = 1112 sq ft / 103.3 sq m
 Raised Ground Floor = 1154 sq ft / 107.2 sq m
 First Floor = 1027 sq ft / 95.4 sq m
 Second Floor = 966 sq ft / 89.8 sq m
 Vaults / Reduced Headroom = 283 sq ft / 26.3 sq m
 Total = 4542 sq ft / 422.0 sq m

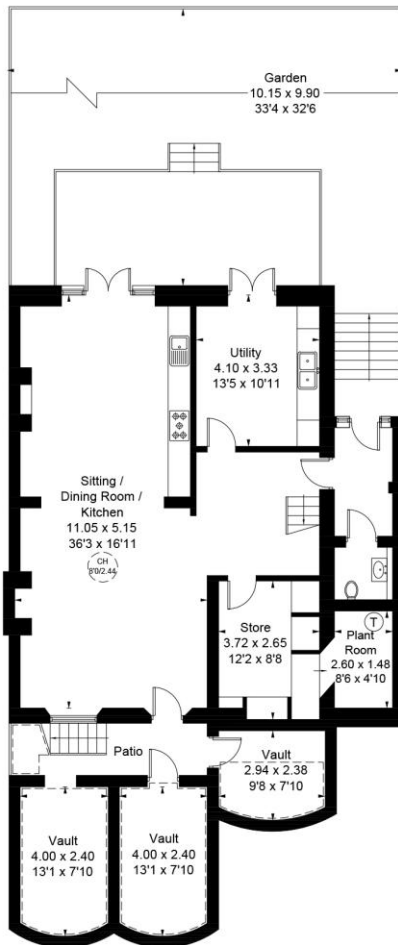


Second Floor

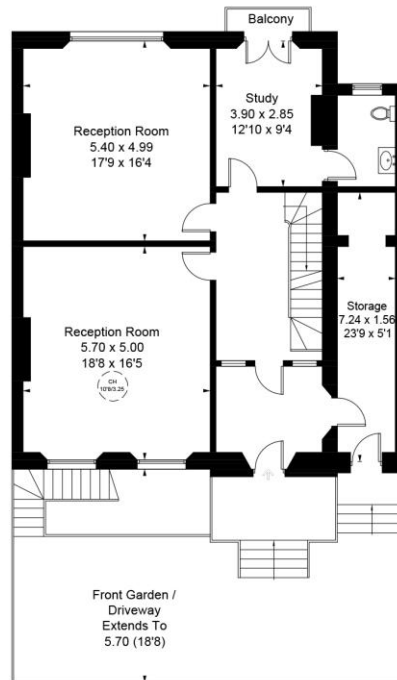
CH = Ceiling Height
 [Dashed Box] = Reduced headroom below 1.5m / 5'0



First Floor



Lower Ground Floor



Raised Ground Floor

This plan is for layout guidance only. Not drawn to scale unless stated. Windows and door openings are approximate. Whilst every care is taken in the preparation of this plan, please check all dimensions, shapes and compass bearings before making any decisions reliant upon them. (ID1306751)