

Mallow Street EC1Y

1 Bed 1 Bath
581 sqft (approx.)

Situated on Mallow Street, just moments from Old Street Roundabout, this top-floor apartment spanning just under 600 sqft (approx.) forms part of a boutique development blending period character with modern design.

- Private balcony
- Built in storage
- Top floor apartment

The Bespoke Agent™



The Bespoke Agent™

The property offers a bright open-plan living space with a fully fitted kitchen and sliding doors leading onto a private decked balcony. The double bedroom benefits from impressive ceiling height and built-in wardrobes, while the modern bathroom is fully mosaic tiled with both a walk-in shower and separate bathtub.

Residents will enjoy being in the centre of it all, with popular cafés and restaurants such as Lantana, Passo Shoreditch, Ozone and Shoreditch Grind on the doorstep. Local fitness options include Gymbox and Virgin Active, both within a few minutes' walk.

With Old Street Tube Station just 30 seconds away and Moorgate a 7-minute walk along City Road, transport connections are effortless.

Available From: Monday 20th October 2025

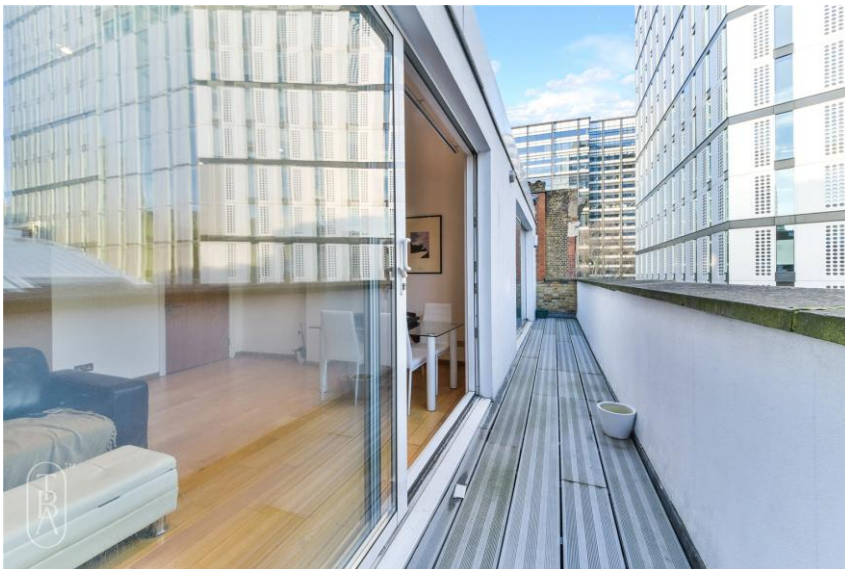
Furnishing: Furnished

Parking: N/A

Local Authority: Islington Council

Council Tax Band: E

The Bespoke Agent™



The Bespoke Agent™