



## Boundary Street E2

1 Bed 1 Bath  
456 sqft (approx)

Situated in a prime central Shoreditch spot by the famous Redchurch Street is this 1 bed 1 bath apartment spanning 456 sqft (approx).

- Oak Flooring Throughout
- Open Plan Kitchen/Living Room
- Central Shoreditch Location

# The Bespoke Agent™



# The Bespoke Agent™

Well fitted with oak flooring throughout and clean fresh colour schemes, there is one double bedroom, a spacious open plan kitchen in the living/dining room and a fully tiled bathroom with walk in shower.

This quarter of Shoreditch benefits from popular spots including the Boundary Rooftop, Shoreditch House, Dishoom, Boxpark and an ever-changing array of new and exciting restaurants, bars and shops all around the corner.

Transport connections are nearby and convenient with Shoreditch High Street Overground less than a 2-minute walk whilst Old Street and Liverpool Street Stations are within a 10 minute walk.

**Available From:** Wednesday 10th December 2025

**Furnishing:** Unfurnished

**Parking:** N/A

**Local Authority:** Hackney Council

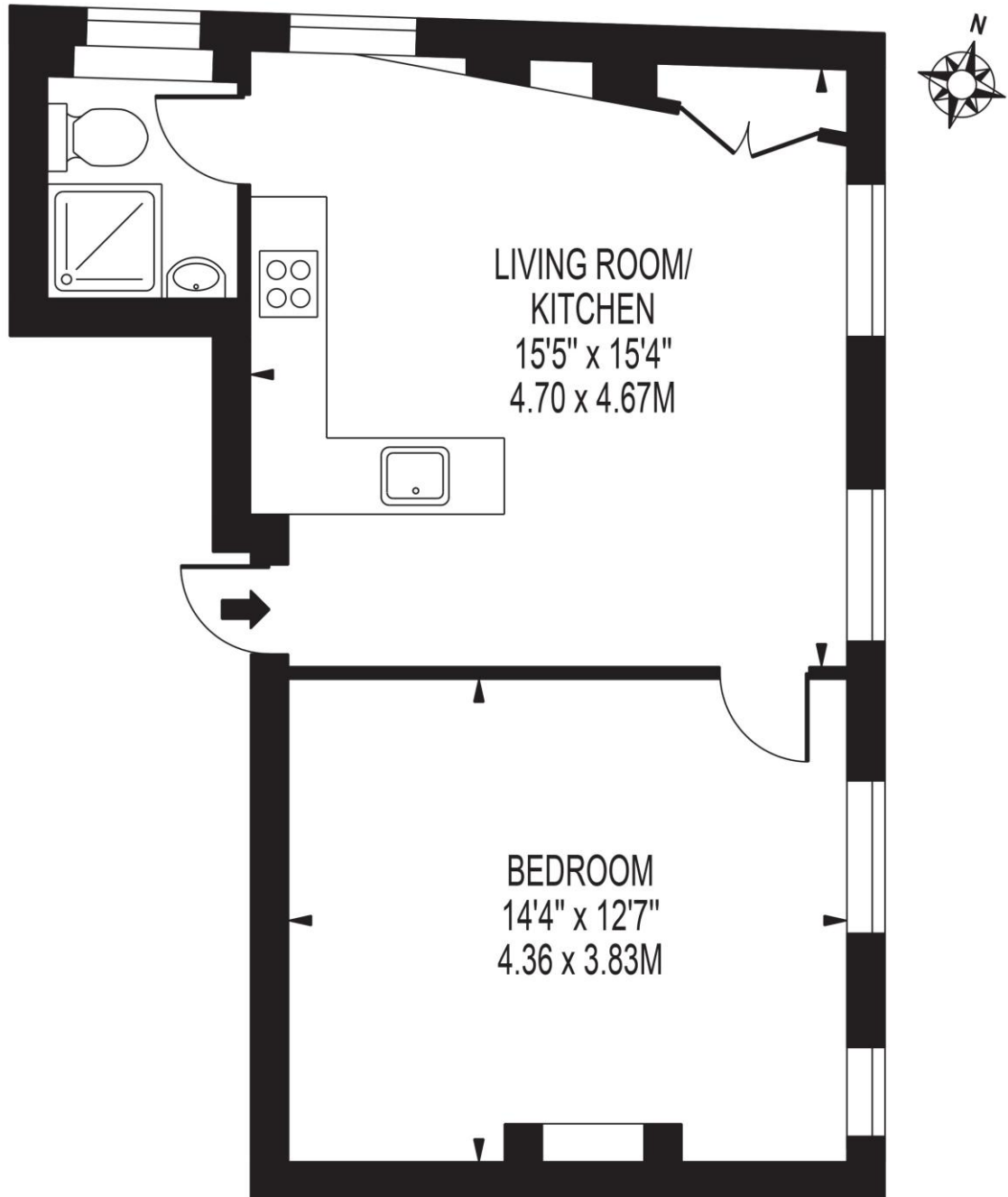
**Council Tax Band:** C

# The Bespoke Agent™



## BOUNDARY STREET

APPROXIMATE GROSS INTERNAL FLOOR AREA: 456 SQ FT - 42.40 SQ M



## FIRST FLOOR

FOR ILLUSTRATION PURPOSES ONLY

THIS FLOOR PLAN SHOULD BE USED AS A GENERAL OUTLINE FOR GUIDANCE ONLY AND DOES NOT CONSTITUTE IN WHOLE OR IN PART AN OFFER OR CONTRACT. ANY INTENDING PURCHASER OR LESSEE SHOULD SATISFY THEMSELVES BY INSPECTION, SEARCHES, ENQUIRIES AND FULL SURVEY AS TO THE CORRECTNESS OF EACH STATEMENT. ANY AREAS, MEASUREMENTS OR DISTANCES QUOTED ARE APPROXIMATE AND SHOULD NOT BE USED TO VALUE A PROPERTY OR BE THE BASIS OF ANY SALE OR LET.